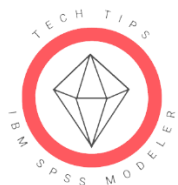




Tech Tips - Encrypt Your Stream in IBM SPSS Modeler

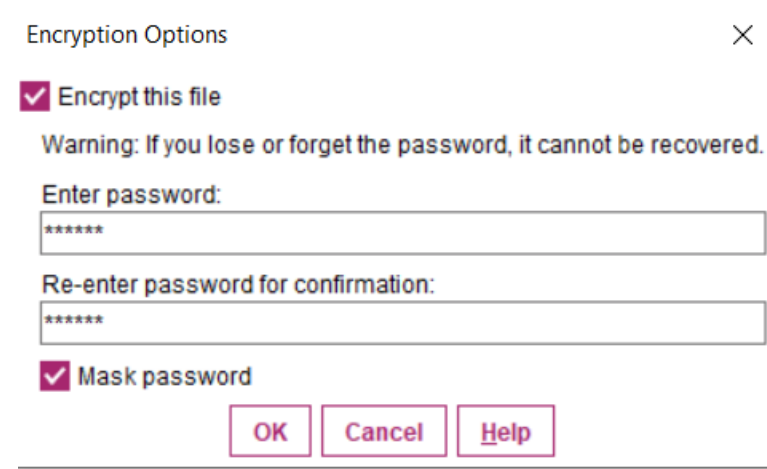
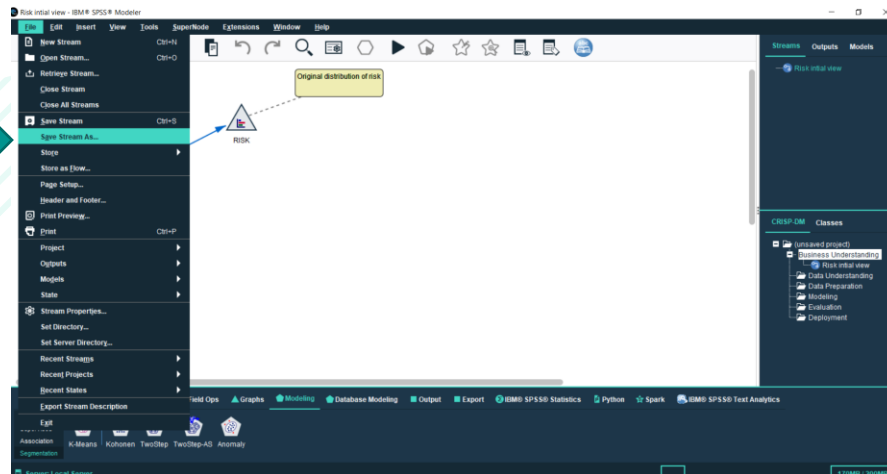


Tech Tips - Encrypt Your Stream in IBM SPSS Modeler



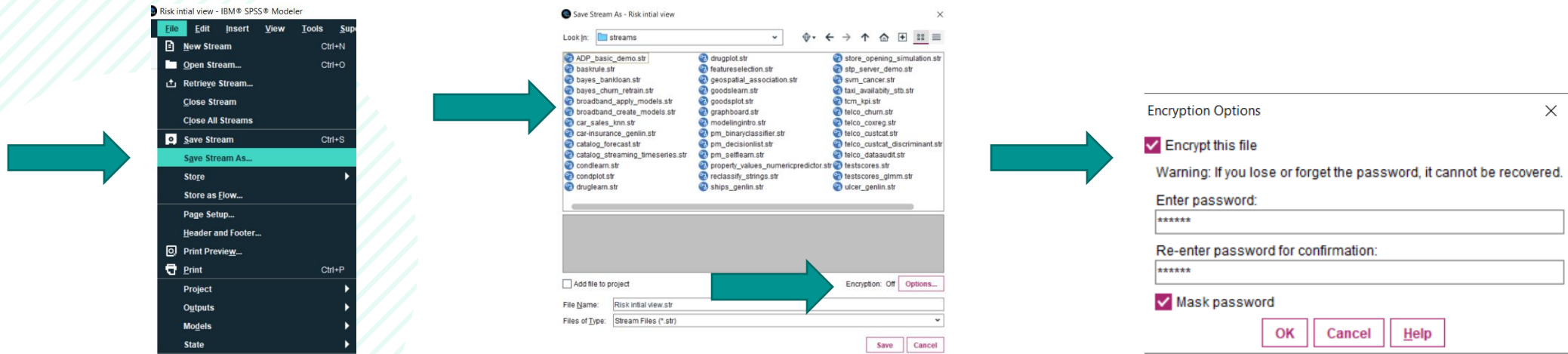
Tech Tips - Encrypt Your Stream

- Here's a quick tip to encrypt a stream. Streams, nodes, projects and output files can be encrypted in IBM SPSS Modeler.
- For example, when saving a stream we can encrypt it and provide a password to increase the security of the stream.



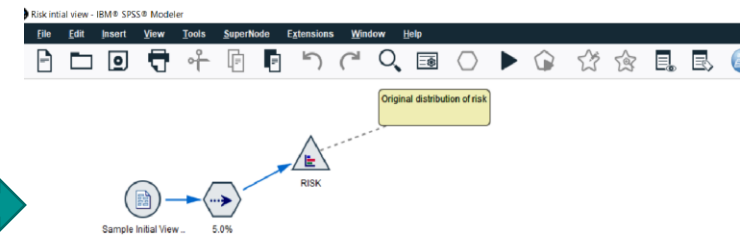
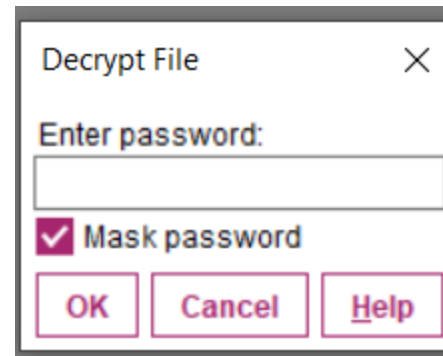
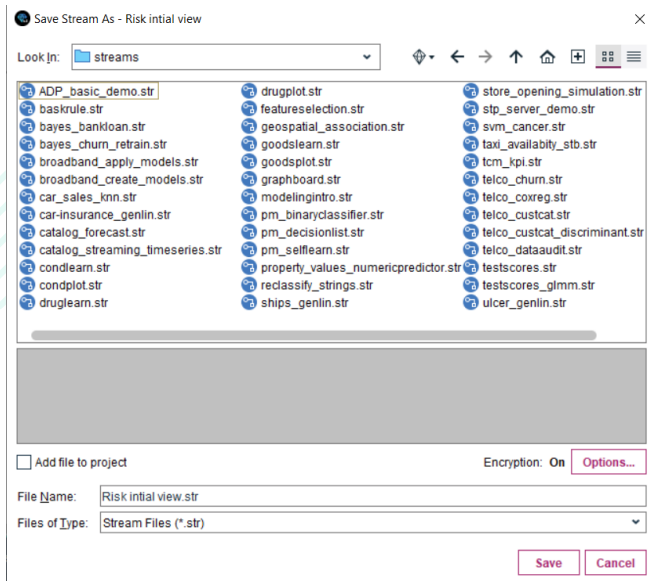
Tech Tips - Encrypt Your Stream

- To encrypt a stream we can go to the **File** menu and select **Save Stream As**.
- This will open the **Save Stream As** window. At the bottom of this window is the option to use **Encryption**.
- Click on the **Options** button. The **Encryption Options** window will open. Tick **Encrypt this file** and enter a password. Make sure you read the **Warning** message. Click **OK**.



Tech Tips - Encrypt Your Stream

- Once you have selected to encrypt the stream and closed it, you can save the stream.
- When you reopen the stream you will need to enter a password. Once you have entered a password, the stream will open.



SPSS Tech Tips

For more **Tech Tips**, go to the Tech Tips section within the Learning Hub.

Contact us



SPSSAdmin@version1.com



+ 44 (0) 203 859 4790
+ 353 (0) 1 865 7800



www.spssanalyticspartner.com



Thank you.