



# Authorised User License Installation for IBM SPSS Modeler 18.4

@Copyright 2022 Version 1 – All Rights Reserved

Company Classification: Client Confidential



# Contents

- 1. INTRODUCTION ..... 3**
- 2. DOWLOADING IBM SPSS MODELER VERSION 18.4 ..... 4**
- 3. INSTALLING IBM SPSS MODELER VERSION 18.4 ..... 6**
- 4. LICENSING YOUR IBM SPSS MODELER VERSION 18.4 ..... 10**
- 5. APPLYING FIX PACKS ..... 12**

## 1. INTRODUCTION

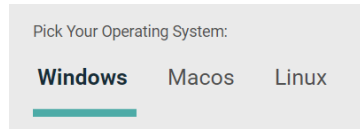
These instructions are for installing the IBM SPSS Modeler 18.4 Site License for Windows desktop computers. A site license allows you to install IBM SPSS Modeler 18.4 for Windows on as many computers as the number of licenses you purchased. You will need your authorisation code to be able to license Modeler. To install, you must be logged on to your computer with administrator privileges.

## 2. DOWNLOADING IBM SPSS MODELER VERSION 18.4

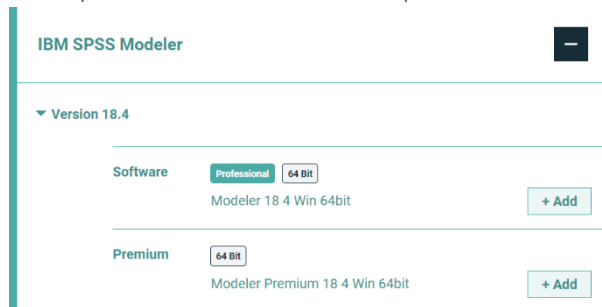
2.1 Please follow the below link to download the version of IBM SPSS Statistics:

[SPSS Customer Portal | SPSS Analytics Partner](#)

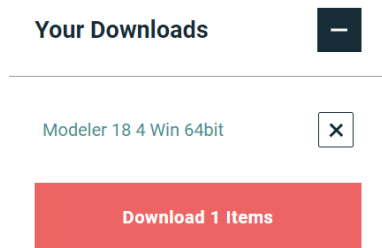
2.2 Scroll down and select your Operating System.



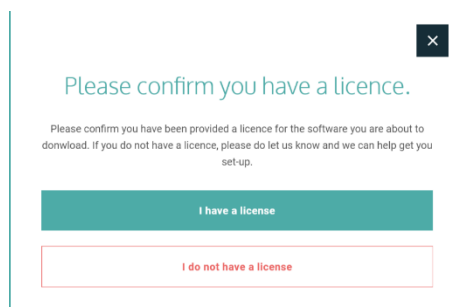
2.3 Expand IBM SPSS Modeler. Expand Version 18.4. Select the software you need and click “Add”.



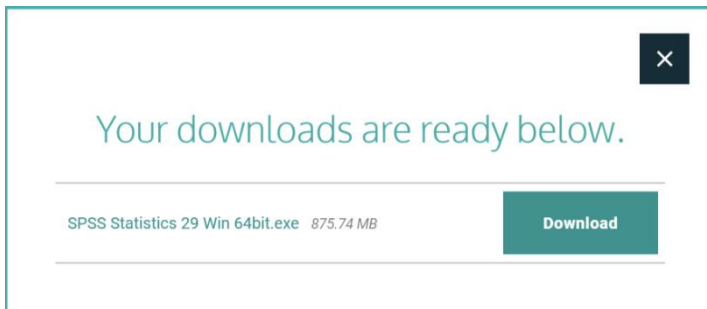
2.4 Your selection will appear in the Your Downloads section to the right. Select “Download”.



2.5 Confirm that you have a license.

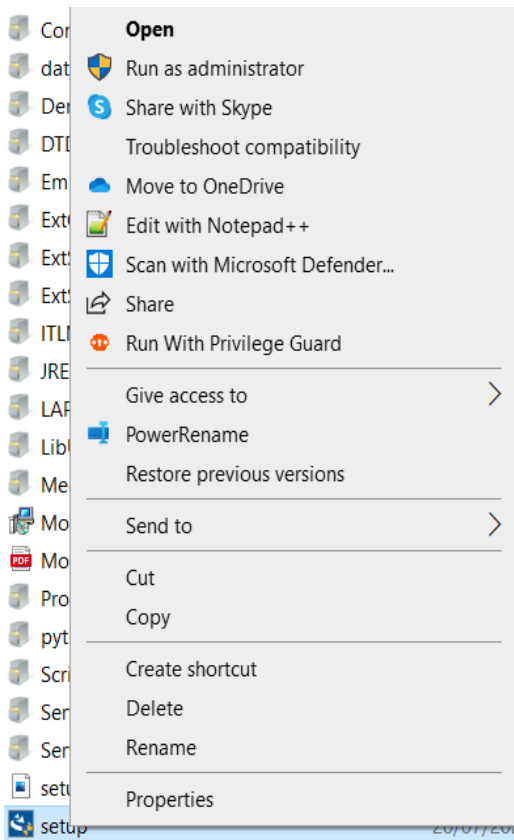


2.6 You will receive a message that your download(s) are ready. Click the “Download” button to download the software.

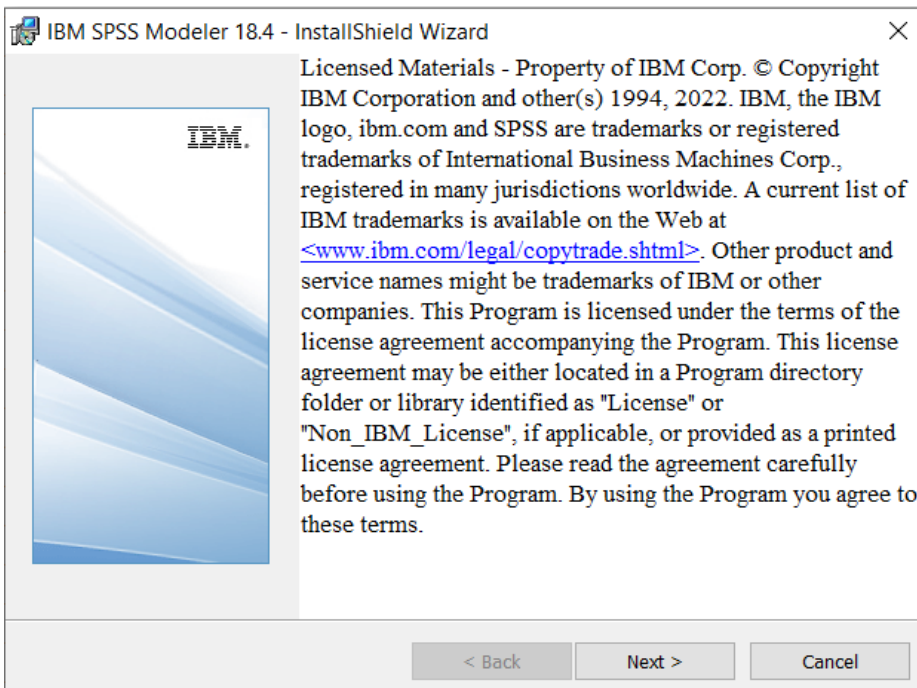


### 3. INSTALLING IBM SPSS MODELER VERSION 18.4

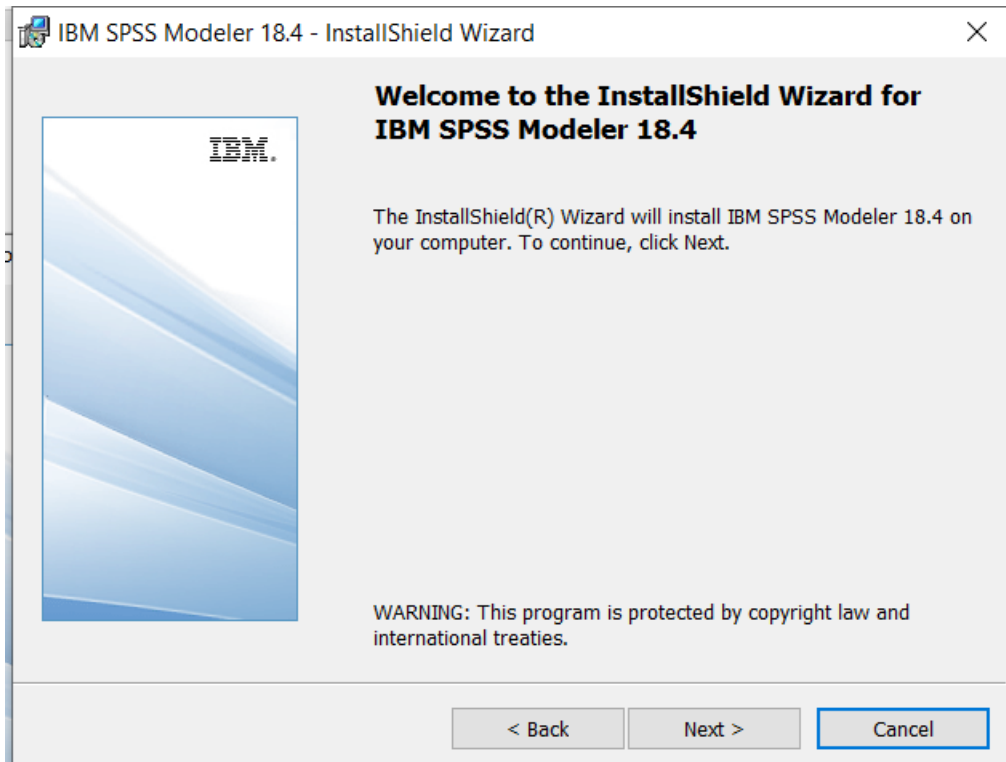
3.1 Once the download is complete, follow the below steps: Right click on the file and select “Run as administrator” if possible.



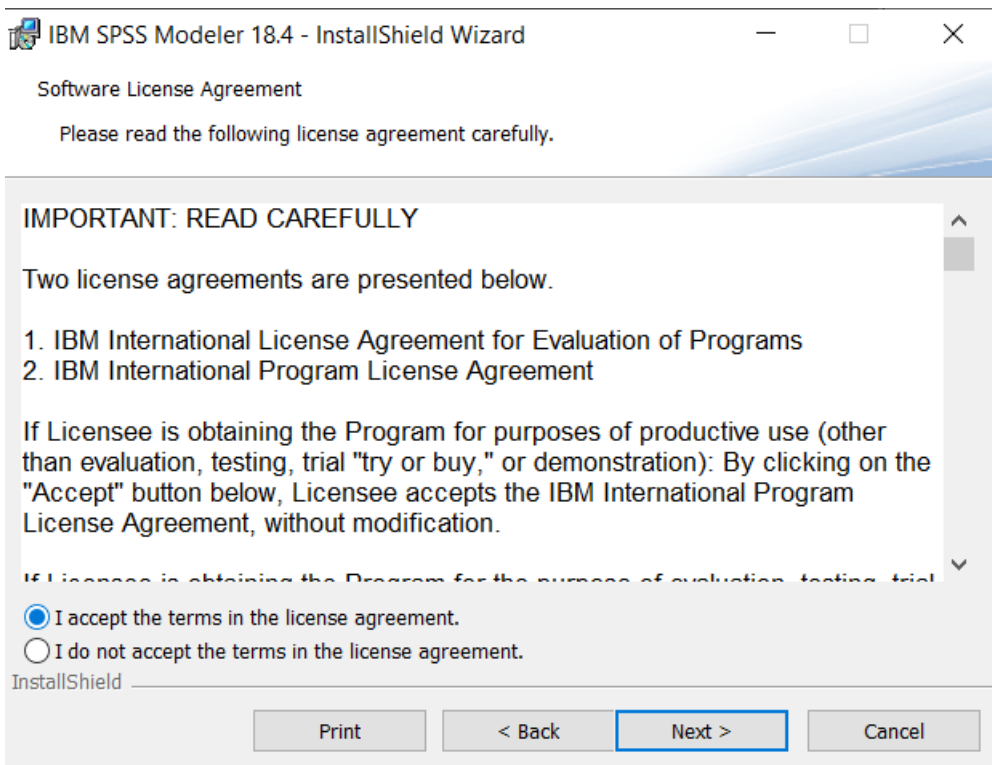
3.2 The installation Wizard will start. Click on “Next”.



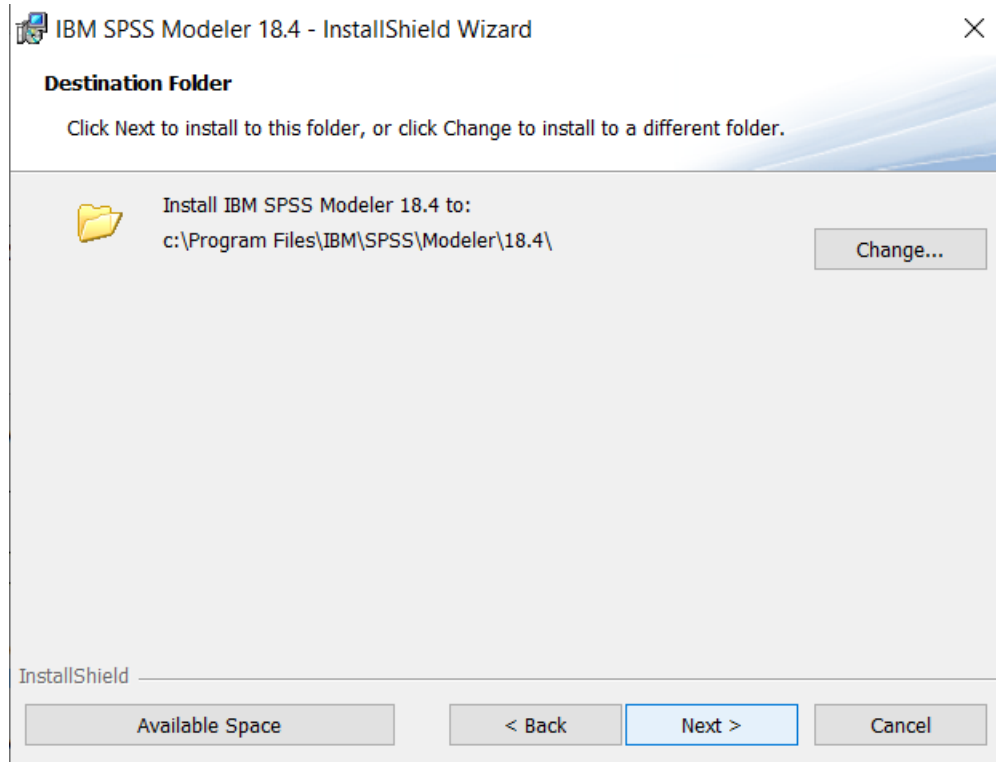
3.3 You will see the Welcome Screen for the Installation Wizard. Click “Next”.



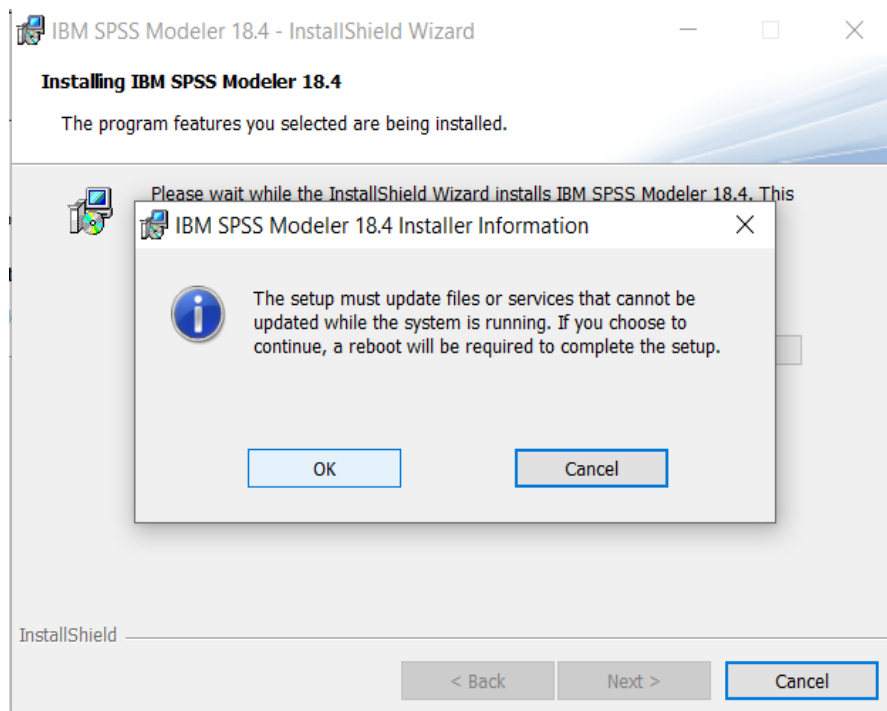
3.4 Accept the terms of the license and click “Next”.



3.5 You can now select the destination folder. To change the installation location, select “Change”. Click “Next”.

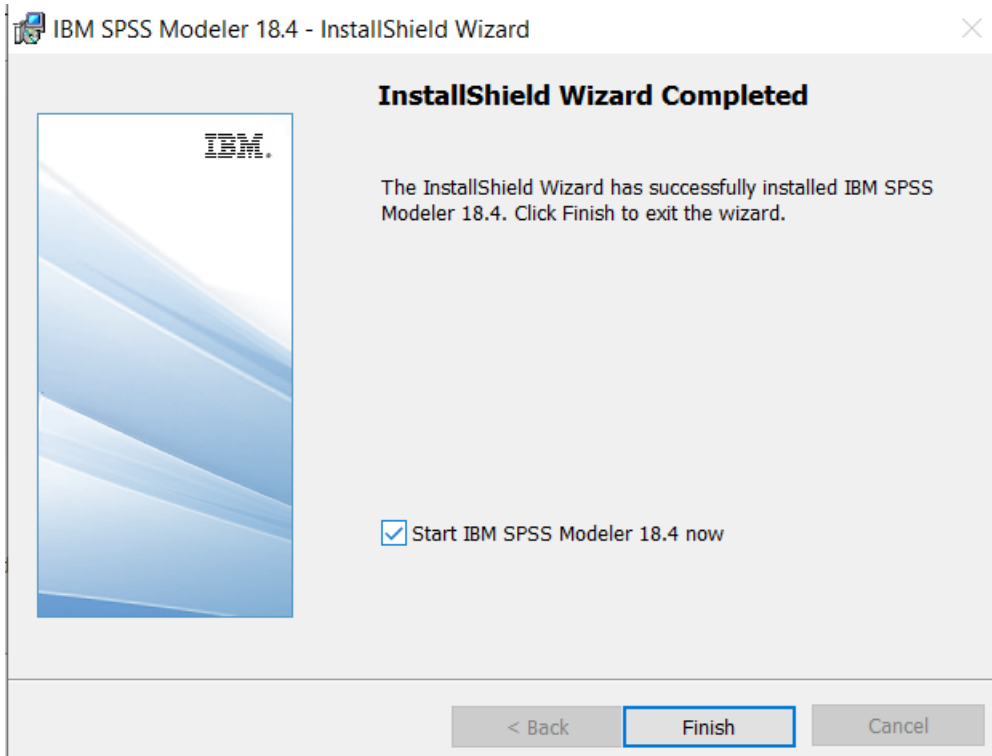


3.6 You will now receive a message about rebooting upon completion of the setup. Click “OK” if possible and “Next”.





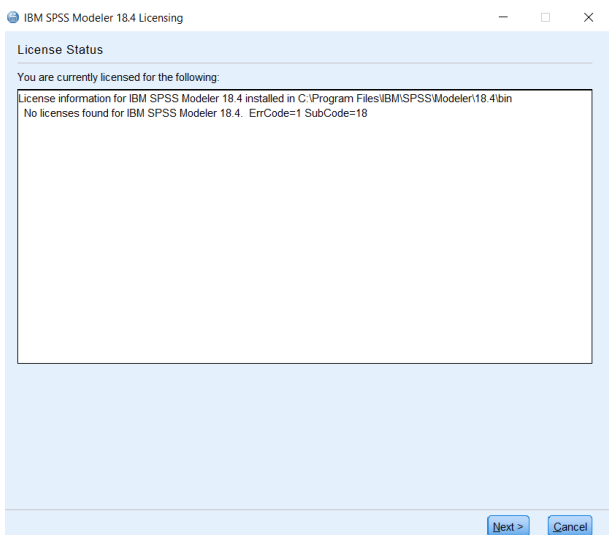
3.7 Once the installation is completed, you will see the screen below. Click on “Finish”.



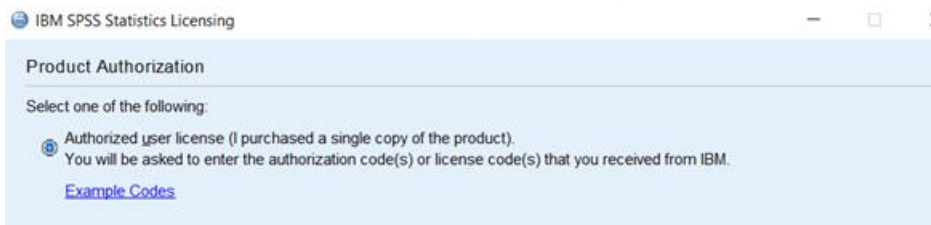
## 4. LICENSING YOUR IBM SPSS MODELER VERSION 18.4

SPSS Modeler 18.4 is licenced through the Licence Authorisation Wizard which can be opened in a number of ways:

A.) If you chose to ‘Start IBM SPSS Modeler 18.4 now’ by ticking the box in the last step, the license authorization wizard will start. You will need to select the option to register your license. You will see the screen below. Click on “Next”.

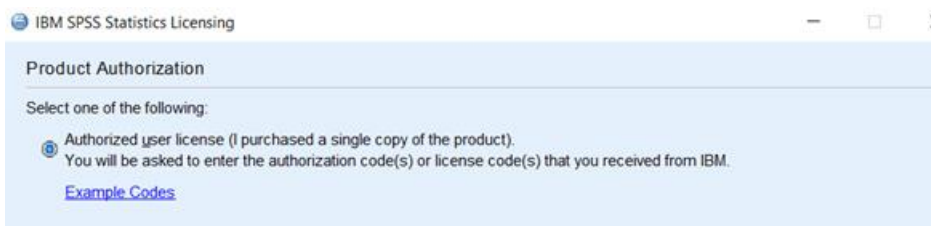


Select “Authorized user license” and continue to step 4.2.

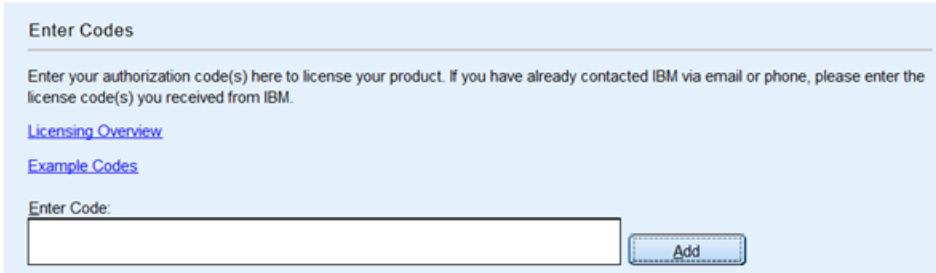


B) If you chose not to start Modeler after installation you can open the Licence Authorisation Wizard by going to the Start menu and selecting **IBM SPSS Modeler 18.4**. Right click on “IBM SPSS Modeler 18.4 Licence Authorisation Wizard” and choose to “Run as Administrator”.

4.1 This will start the licensing tool. Click “Next” on the License Status screen. You will see the screen below. Select “Authorised User Licence” and “Next”.



4.2 Please copy and paste your Authorisation Code into the space provided and click “Add” and “Next”. If you have more than one code, you can click “Add” and enumerate them one by one.



4.3 You will receive a message that authorization has succeeded.

4.4 Your IBM SPSS Modeler will now be fully licenced when you open it next. You can click “Finish” and restart your computer for the licencing to be fully activated.

## 5. APPLYING FIX PACKS

You will want to ensure that you apply any necessary fix packs at the latest fix pack level. Fix packs can be downloaded at [SPSS Customer Portal | SPSS Analytics Partner](#).

Please ensure that you complete all pre-installation and post-installation tasks as described in the fix pack instructions.



**Thank you**

**Contact:**

w: [version1.com](http://version1.com)

e: [info@version1.com](mailto:info@version1.com)