



# Authorised User License Installation for IBM SPSS Statistics 29

@Copyright 2023 Version 1 – All Rights Reserved

Company Classification: Client Confidential



## Contents

<b>1. INTRODUCTION .....</b>	<b>3</b>
<b>2. DOWLOADING IBM SPSS STATISTICS VERSION 29 .....</b>	<b>4</b>
<b>3. INSTALLING IBM SPSS STATISTICS VERSION 29 .....</b>	<b>6</b>
<b>4. LICENSING YOUR IBM SPSS STATISTICS VERSION 29 .....</b>	<b>10</b>
<b>5. APPLYING FIX PACKS .....</b>	<b>12</b>
<b>6. FREQUENTLY ASKED QUESTIONS .....</b>	<b>13</b>

## 1. INTRODUCTION

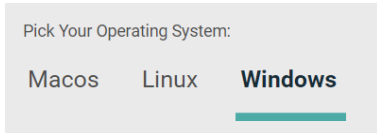
These instructions are for installing the IBM SPSS Statistics 29 Site License for Windows desktop computers. A site license allows you to install IBM SPSS Statistics 29 for Windows on as many computers as the number of licenses you purchased. You will need your authorisation code to be able to license the IBM SPSS Statistics 29 Site License. To install, you must be logged on to your computer with administrator privileges.

## 2. DOWNLOADING IBM SPSS STATISTICS VERSION 29

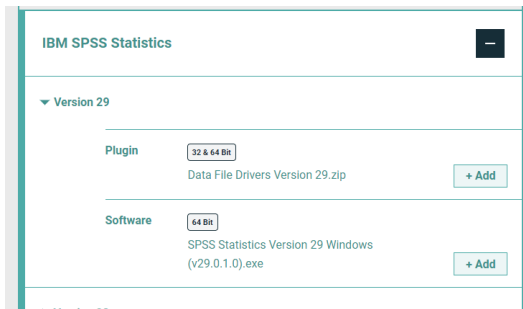
2.1 Please follow the below link to download the version of IBM SPSS Statistics:

<https://www.spssanalyticspartner.com/learning-hub/support-documentation/software-downloads/>

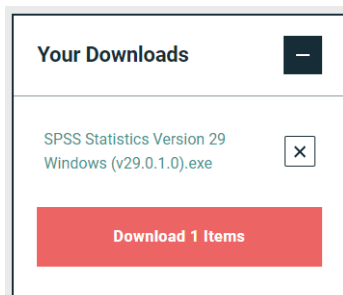
2.2 Scroll down and select your Operating System.



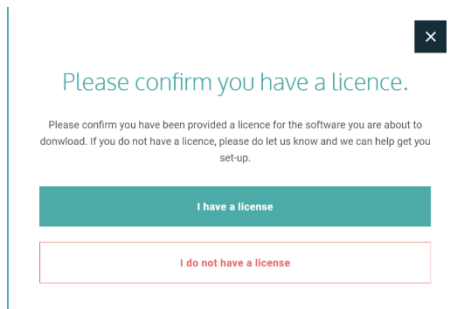
2.3 Expand IBM SPSS Statistics and Version 29. Select Software and SPSS Statistics Version 29 Windows.exe. Click Add.



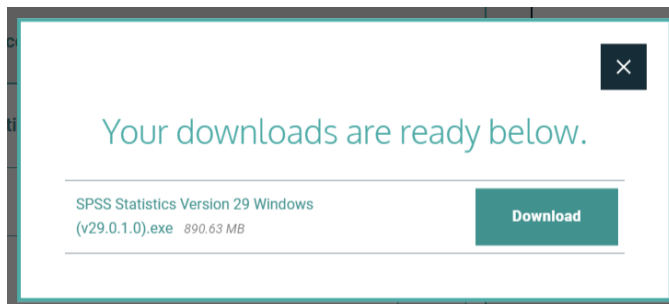
2.4 Your selection will appear in the 'Your Downloads' section to the right. Select Download.



2.5 Confirm that you have a license.

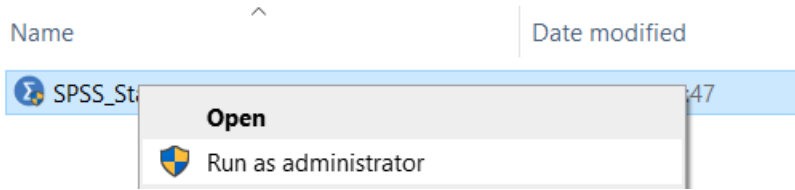


2.6 You will receive a message that your download(s) are ready. Click the Download button to download the software.

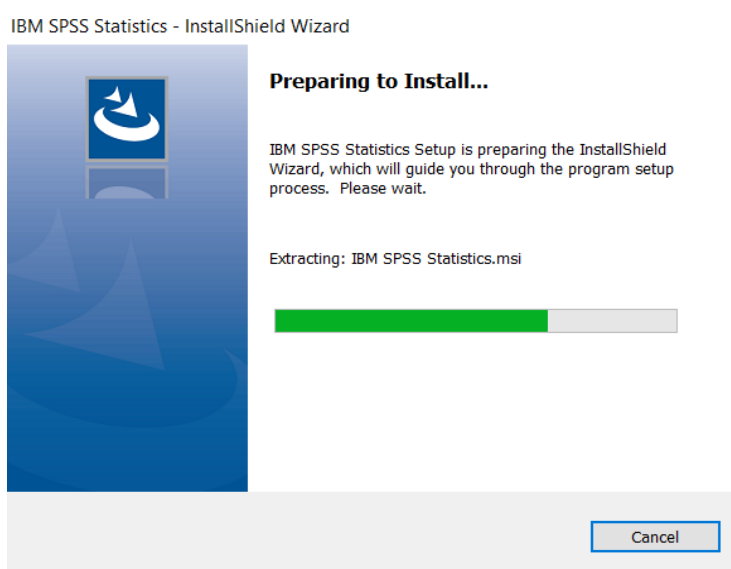


### 3. INSTALLING IBM SPSS STATISTICS VERSION 29

- 1) Once the download is complete, follow the below steps: Right click and select “Run as administrator” if possible.



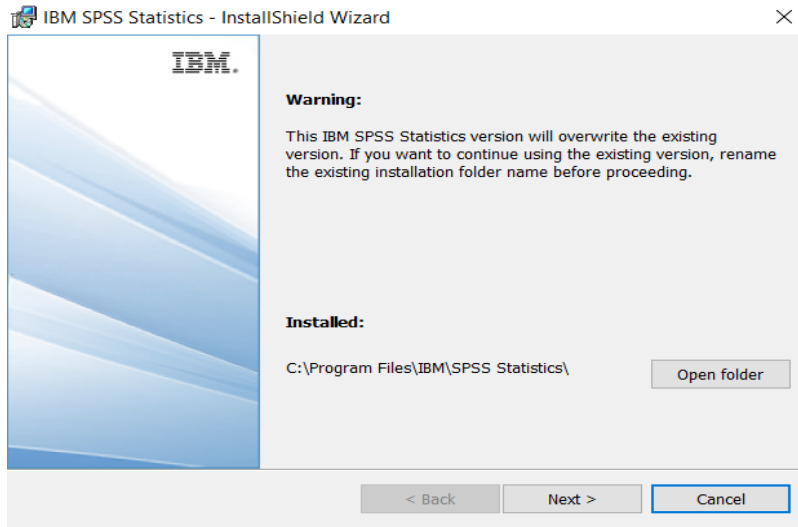
- 2) You will receive a message that SPSS is “Preparing to Install”.



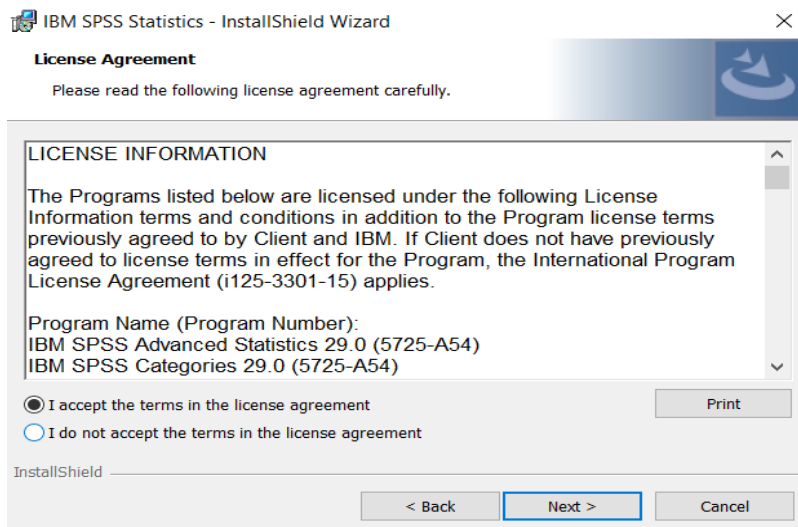
- 3) Note that you will receive a message that informs you that IBM SPSS Statistics will overwrite any existing installation. Click on “Next”.



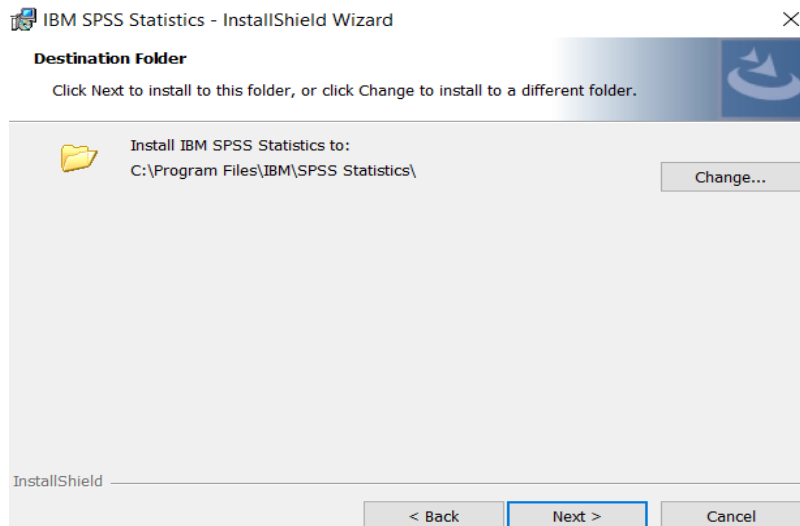
- 4) You will receive another message: “This IBM SPSS Statistics version will overwrite the existing version. If you want to continue using the exiting version, rename the exiting installation folder name before proceeding”. Once you are ready to proceed with the installation click “Next”.



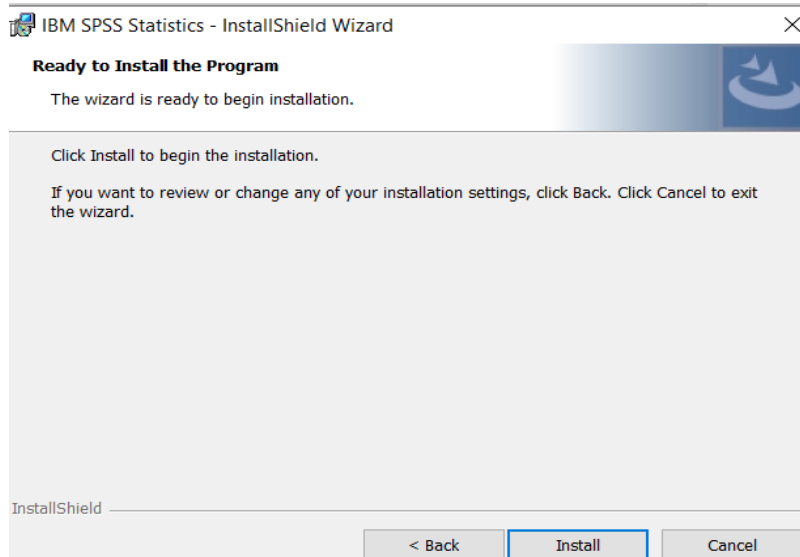
- 5) Accept the terms of the license and click “Next”.



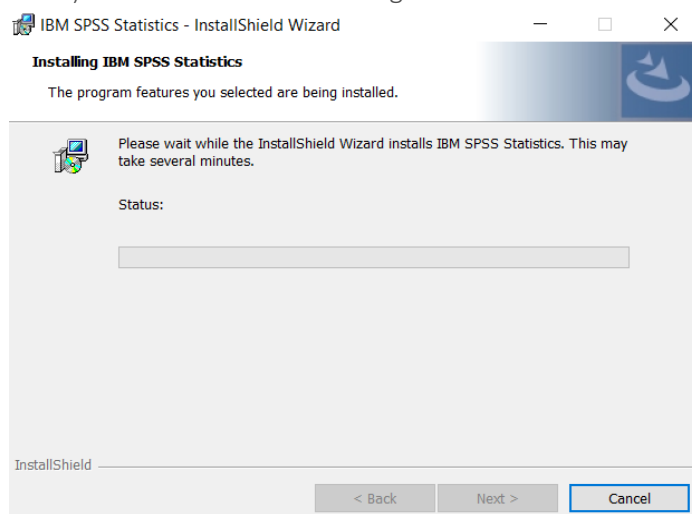
- 6) Select the destination folder. You can select “Change” to select another installation location. Click on “Next”.



7) Click "Install".

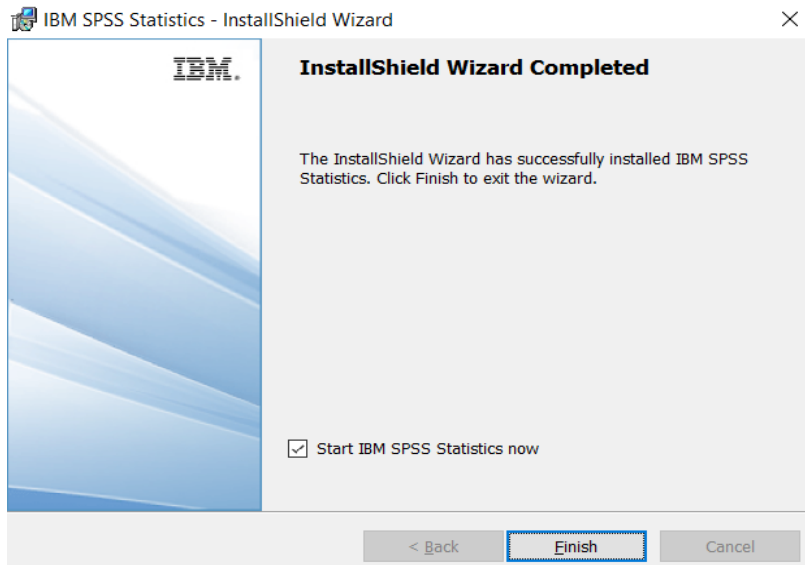


8) You will receive a message that Statistics 29 is installing.





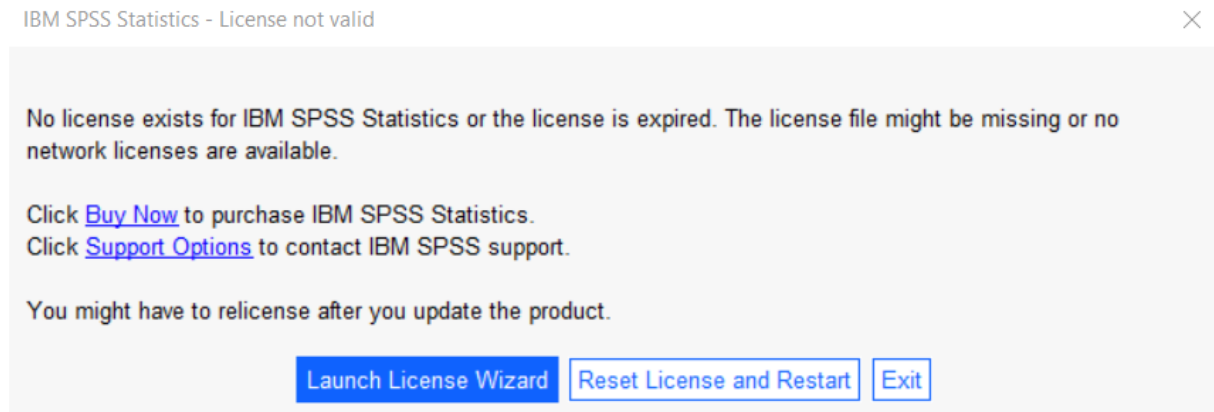
9) You will receive a message that the installation was successful.



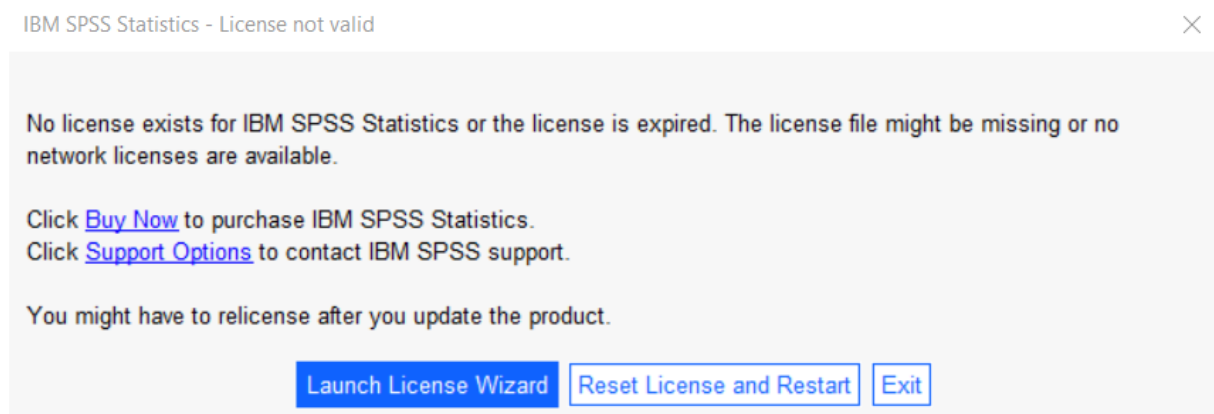
## 4. LICENSING YOUR IBM SPSS STATISTICS VERSION 29

IBM SPSS Statistics 29 is licenced through the Licence Authorisation Wizard which can be opened in a number of ways:

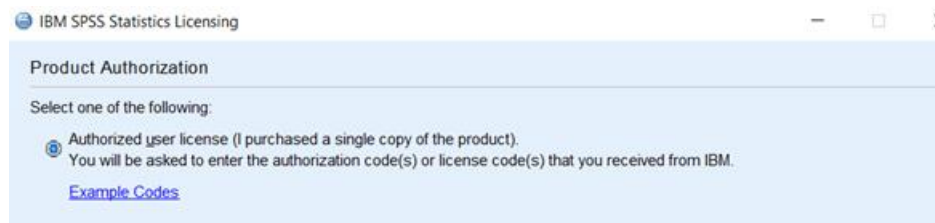
A.) If you chose to “Start IBM SPSS Statistics 29 now” by ticking the box in the last step, you will get the screen below. Select “Launch License Wizard”.



B) If you chose not to start Statistics after installation, and you open Statistics later, you will receive the same screen shown below. Select “Launch License Wizard”.



1) Then you will see the screen shown below. Select “Authorized User licence” and “Next”.



2) Please copy and paste your Authorisation Code in the “Enter Code” box and click “Add” and “Next”. If you have more than one code, you can click Add and enumerate them one by one.

**Enter Codes**

---

Enter your authorization code(s) here to license your product. If you have already contacted IBM via email or phone, please enter the license code(s) you received from IBM.

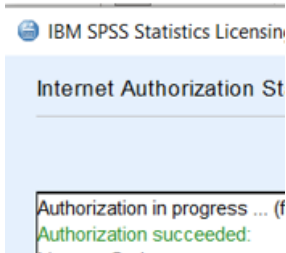
[Licensing Overview](#)

[Example Codes](#)

Enter Code:

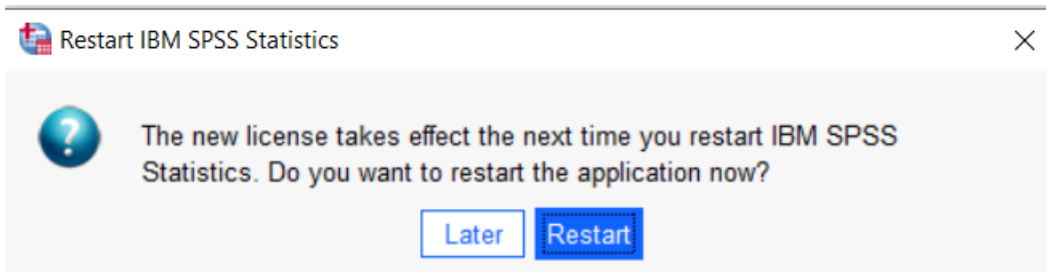


3) You will receive a message that authorization has succeeded.



4) Your IBM SPSS Statistics will now be fully licenced when you open it next. You can click 'Finish' and restart your computer for the licencing to be fully activated.

5) You will then receive a message that states, "The new license takes effect the next time you restart IBM SPSS Statistics". You have the option to select "Later" or "Restart".



## 5. APPLYING FIX PACKS

You will want to ensure that you apply any necessary fix packs at the latest fix pack level. Fix packs can be downloaded at [SPSS Customer Portal | SPSS Analytics Partner](#).

Please ensure that you complete all pre-installation and post-installation tasks as described in the fix pack instructions.

## 6. FREQUENTLY ASKED QUESTIONS

You can access further help at:

[IBM SPSS Support FAQs - SPSS Analytics Partner](#)

Here you can find answers to frequently asked questions about installing and licensing IBM SPSS Software in clear, easy-to-follow language.



**Thank you**

**Contact:**

w: [version1.com](http://version1.com)

e: [info@version1.com](mailto:info@version1.com)