



Authorised User License Installation for IBM SPSS Amos 29

@Copyright 2022 Version 1 – All Rights Reserved

Company Classification: Client Confidential



Contents

- 1. INTRODUCTION 3**
- 2. DOWLOADING IBM SPSS AMOS VERSION 29 4**
- 3. INSTALLING IBM SPSS AMOS VERSION 29 6**
- 4. LICENSING YOUR IBM SPSS AMOS VERSION 29 9**
- 5. APPLYING FIX PACKS 12**

1. INTRODUCTION

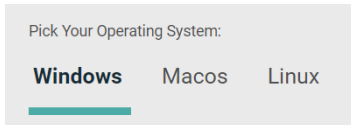
These instructions are for installing the IBM SPSS Amos 29 Site License for Windows desktop computers. A site license allows you to install IBM SPSS Amos 29 for Windows on as many computers as the number of licenses you purchased. You will need your authorisation code to be able to license the IBM SPSS Amos 29 Site License. To install, you must be logged on to your computer with administrator privileges.

2. DOWLOADING IBM SPSS AMOS VERSION 29

2.1 Please follow the below link to download the version of IBM SPSS Statistics:

[SPSS Customer Portal | SPSS Analytics Partner](#)

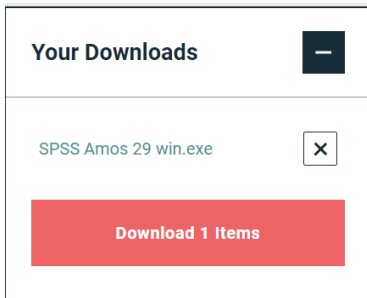
2.2 Scroll down and select your Operating System.



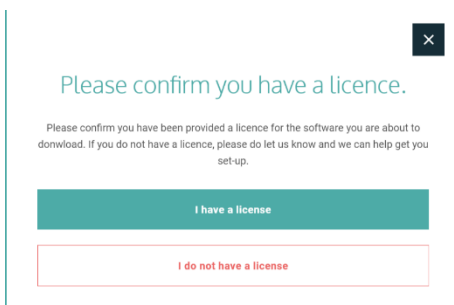
2.3 Expand IBM SPSS Amos and Version 29. Select the software you need and click Add.



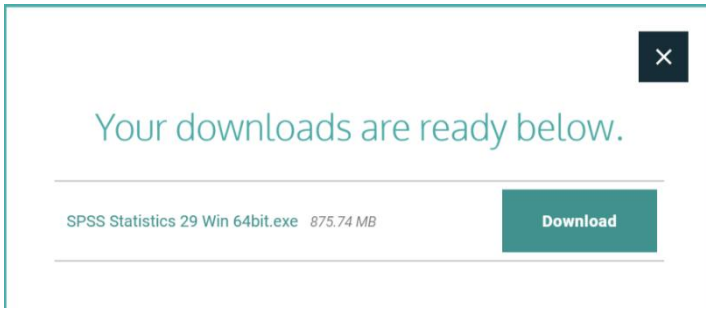
2.4 Your selection will appear in the 'Your Downloads' section to the right. Select Download.



2.5 Confirm that you have a license.

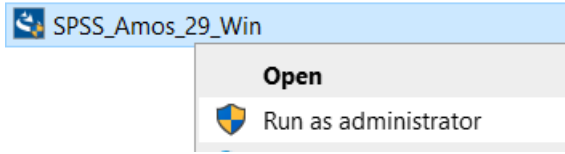


2.6 You will receive a message that your download(s) are ready. Click the Download button to download the software.

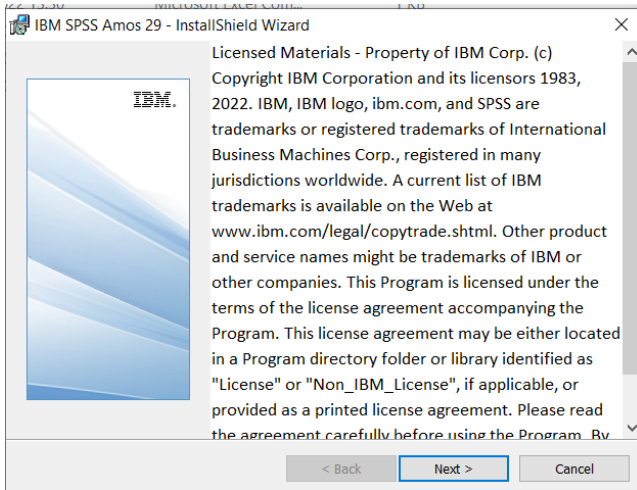


3. INSTALLING IBM SPSS AMOS VERSION 29

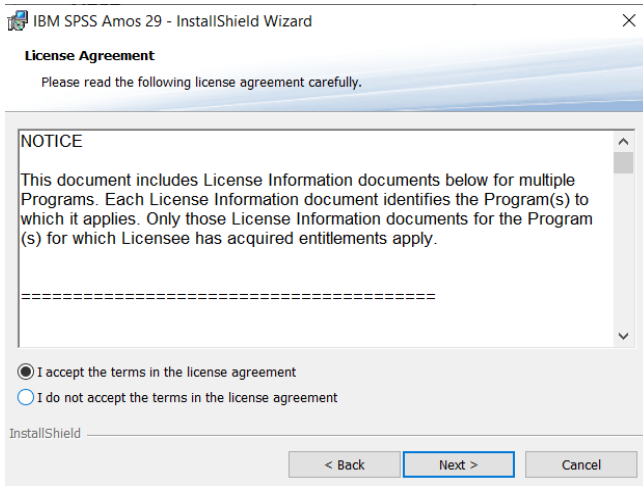
- 1) Once the download is complete, follow the below steps. To get started right click on the software and select “Run as administrator” if possible.



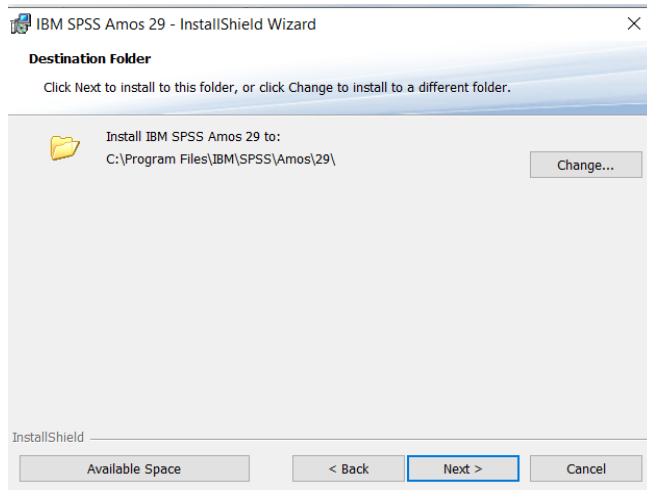
- 2) The installation will start. Click on “Next”.



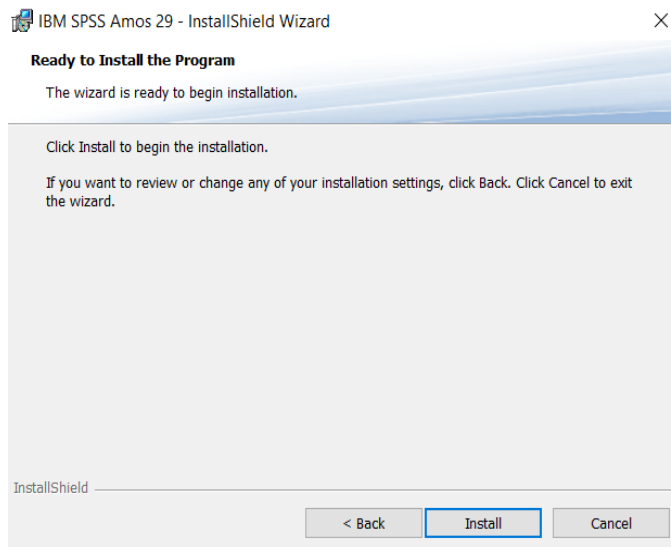
- 3) Accept the terms of the license and click “Next”.



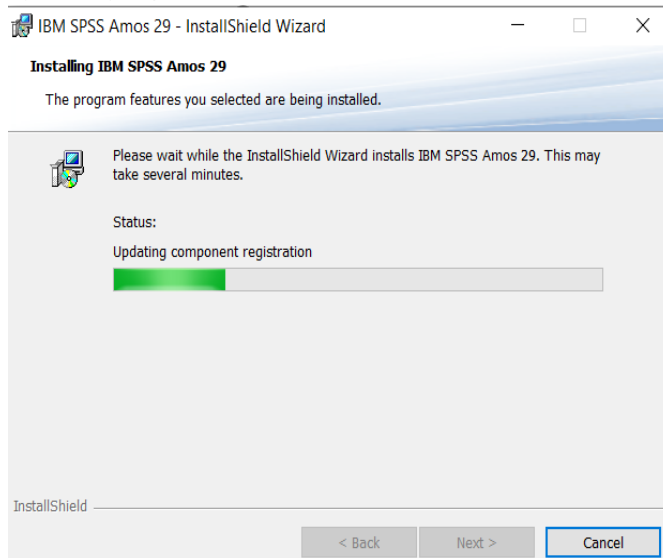
- 4) Select the destination folder. You can select “Change” to select another installation location. Click on “Next”.



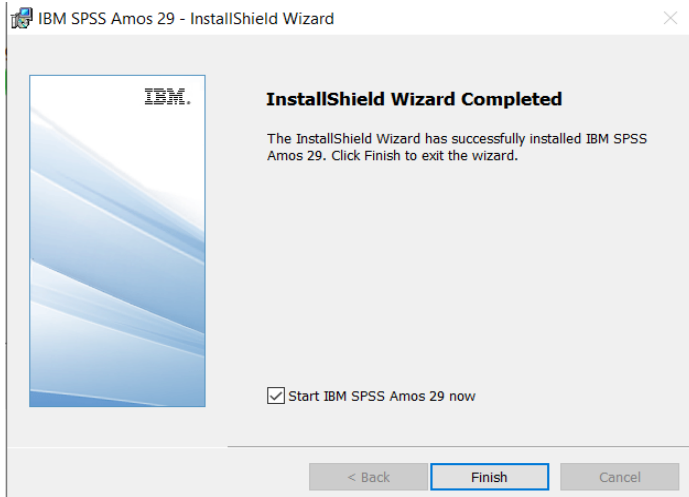
5) Click "Install".



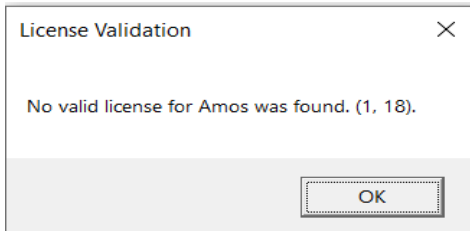
6) The program will install.



7) You will receive a message that the installation has been successful. Click “Finish”.



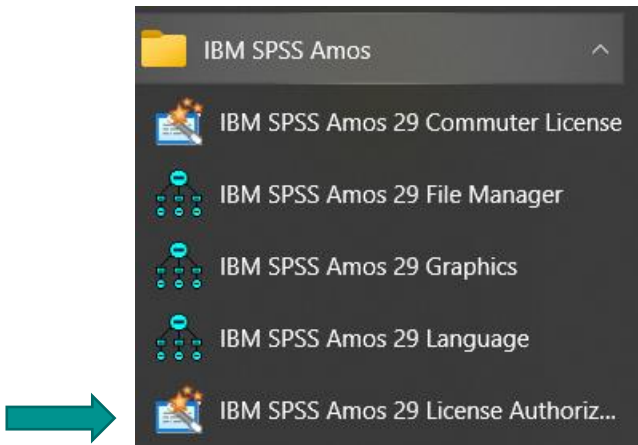
8) Once you click finish you will receive the message below. Don't worry - you just need to apply your license code.



4. LICENSING YOUR IBM SPSS AMOS VERSION 29

IBM SPSS Amos 29 is licenced through the Licence Authorisation Wizard. *To use Amos, you will need to run the License Authorization wizard.*

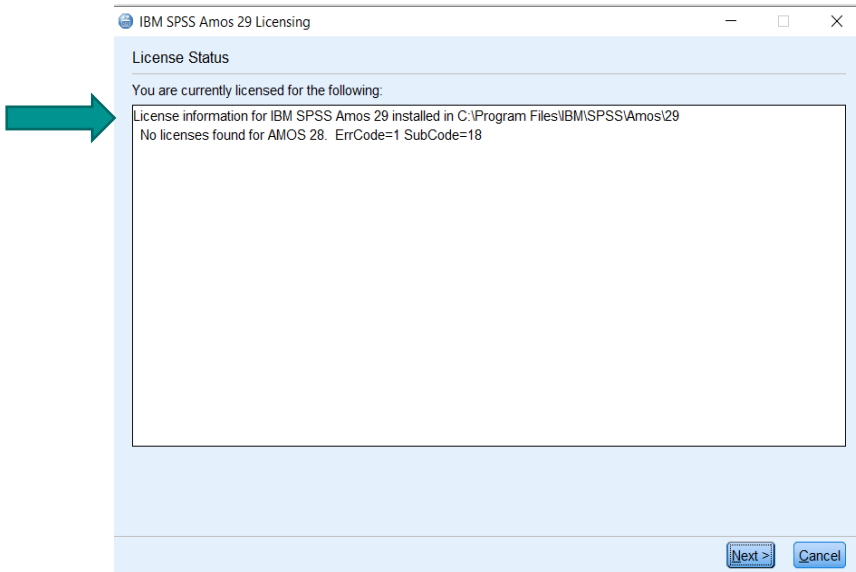
- 1) To do this go to the Start menu and expand the “IBM SPSS Amos” folder. Select the “IBM SPSS Amos 29 License Authorization Wizard”. The arrow below shows where this is located.



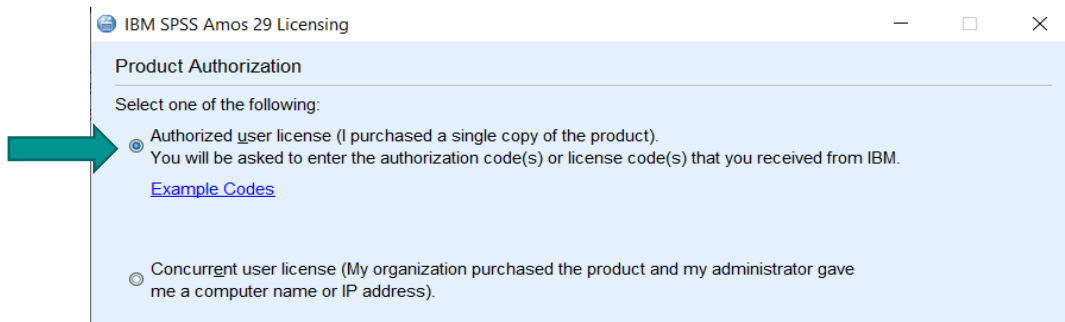
- 2) Once you select “IBM SPSS Amos 29 License Authorization Wizard” you will see the screen below. The licensing tool is starting.



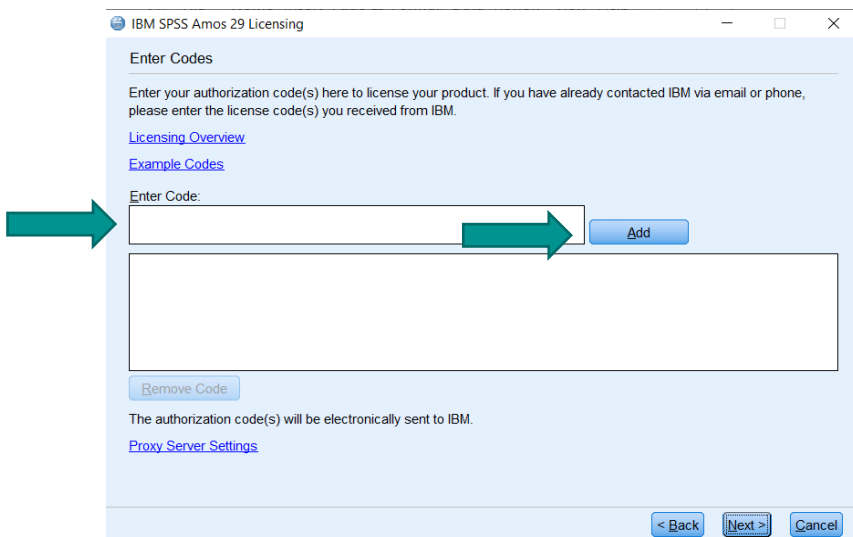
- 3) You will then see the message below. Click on “Next” to apply your license.



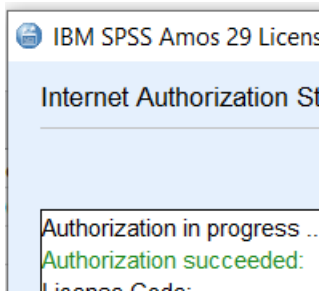
4) Select "Authorized user license". Click on "Next".



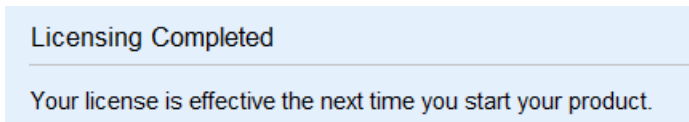
5) Enter your license key in the "Enter Code" box and click on "Add". Click on "Next".



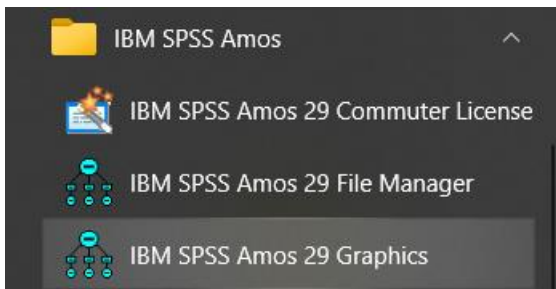
6) You will receive a message that "Authorization succeeded".



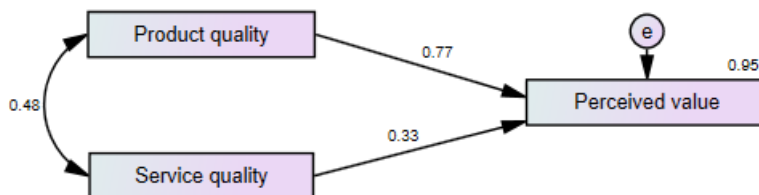
7) You will receive a message that your license is effective the next time you start your product.



8) You can now open Amos. Go to the Start menu and expand the “IBM SPSS Amos” folder. Select “IBM SPSS Amos 29 Graphics”.



9) You can now start using IBM SPSS Amos version 29.



5. APPLYING FIX PACKS

You will want to ensure that you apply any necessary fix packs at the latest fix pack level. Fix packs can be downloaded at [SPSS Customer Portal | SPSS Analytics Partner](#).

Please ensure that you complete all pre-installation and post-installation tasks as described in the fix pack instructions.



Thank you

Contact:

w: version1.com

e: info@version1.com