



---

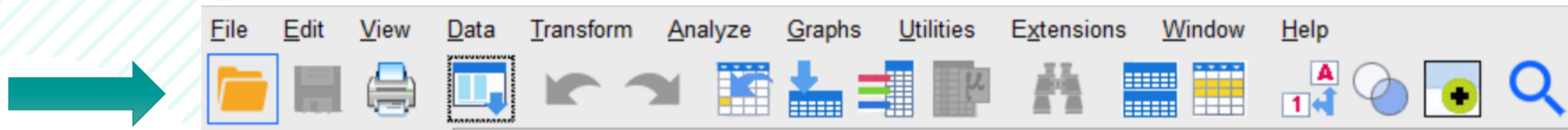
## Tech Tips - Open Data Document Tool in IBM SPSS Statistics

## Tech Tips - Open Data Document Tool in IBM SPSS Statistics



# Tech Tips - Open Data Document Tool

- ***Did you know that there is an easy way to open data in IBM SPSS Statistics?***
- The open data document tool sits on the toolbar beneath the menus. Users can hover a cursor over each tool to see a description.
- A folder represents the open data document tool.

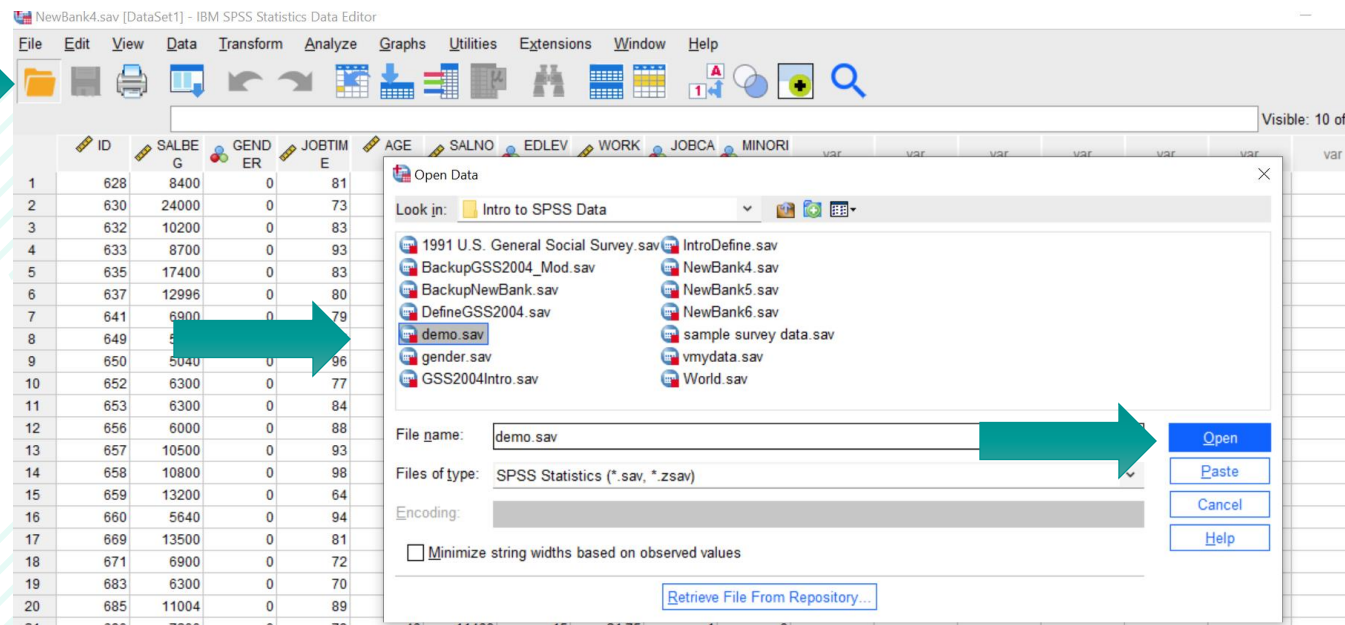


Open data document

	ID	SALBEG	GENDER	JOBTIME	AGE	SALNOW	EDLEVEL	WORKEXP	JOBCAST	MINORITY	var
1	628	8400	0	81	28	16080	16	.25	4	0	
2	630	24000	0	73	40	41400	16	12.50	5	0	
3	632	10200	0	83	31	21960	15	4.08	5	0	

# Tech Tips - Open Data Document Tool

- To open a document using the Open Data Document tool, simply click on the folder.
- This will allow users to navigate to the data file that they need. Once the file is selected, click **Open** to open the data in IBM SPSS Statistics. Files of type allows users to select the type of file to open.



# SPSS Tech Tips

For more **Tech Tips**, go to the Tech Tips section within the Learning Hub.

## Contact us



[SPSSAdmin@version1.com](mailto:SPSSAdmin@version1.com)



+ 44 (0) 203 859 4790  
+ 353 (0) 1 865 7800



[www.spssanalyticspartner.com](http://www.spssanalyticspartner.com)



# Thank you.