

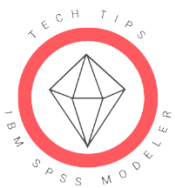


---

## Tech Tips - Quickly Remove Unconnected Nodes in Streams in IBM SPSS Modeler

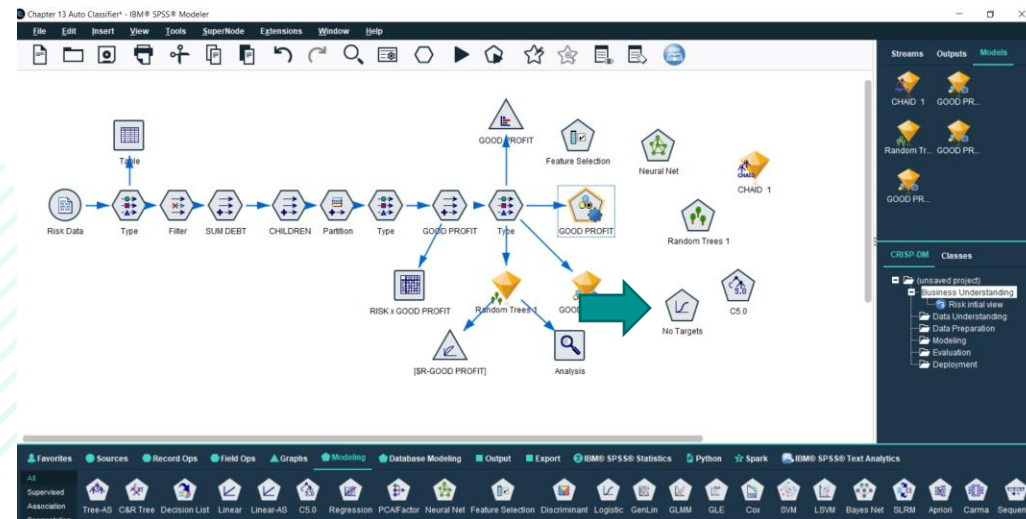
---

## Tech Tips - Quickly Remove Unconnected Nodes in Streams in IBM SPSS Modeler



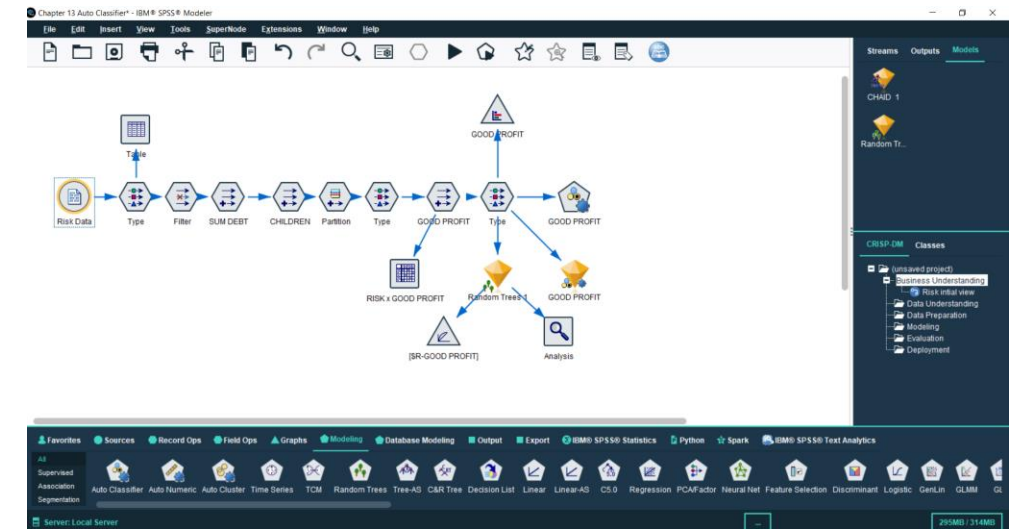
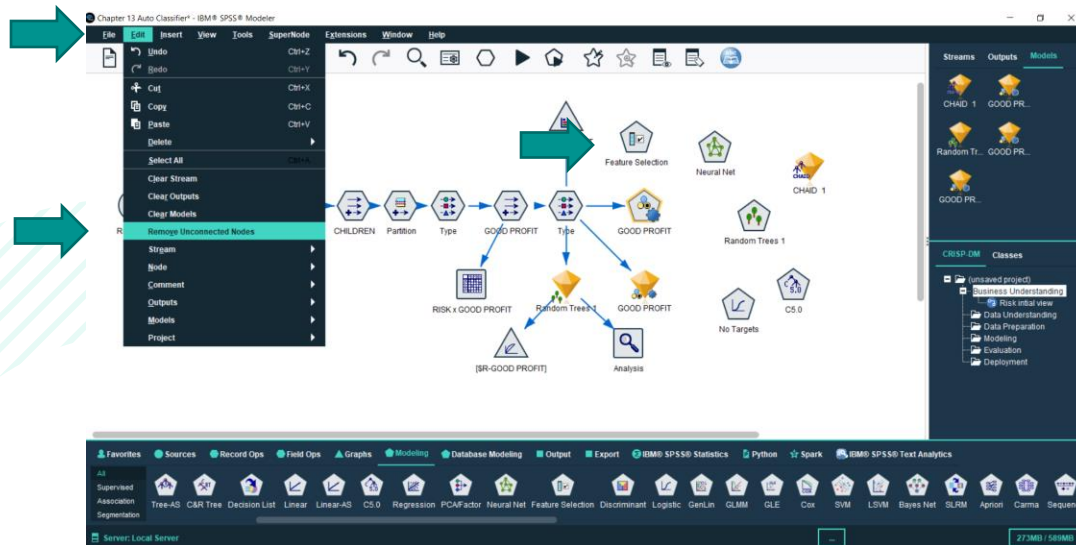
# Tech Tips - Quickly Remove Unconnected Nodes in Streams

- Here's a quick tip to clean up your stream. As you are working you may have used many nodes to prepare your data and build models.
- For example, if you run an **Auto Classifier** node, you can compare the performance of multiple models. From the node, individual modelling nodes can be generated to the stream. Below, the **Random Trees** model generated from the **Auto Classifier** node is connected to the stream. There are several nodes, however, that are not connected to the stream and we want to remove these nodes quickly.



# Tech Tips - Quickly Remove Unconnected Nodes in Streams

- To clean up the stream, go to the **Edit** menu and select **Remove Unconnected Nodes**. This will clean up the stream.



# SPSS Tech Tips

For more **Tech Tips**, go to the Tech Tips section within the Learning Hub.

## Contact us



[SPSSAdmin@version1.com](mailto:SPSSAdmin@version1.com)



+ 44 (0) 203 859 4790  
+ 353 (0) 1 865 7800



[www.spssanalyticspartner.com](http://www.spssanalyticspartner.com)



**Thank you.**