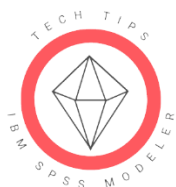




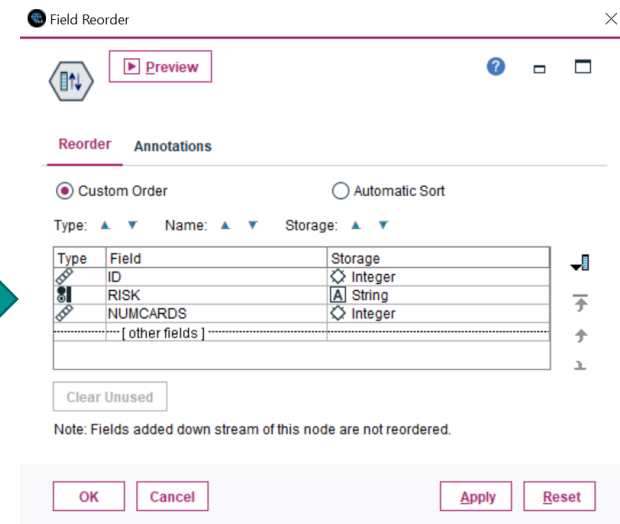
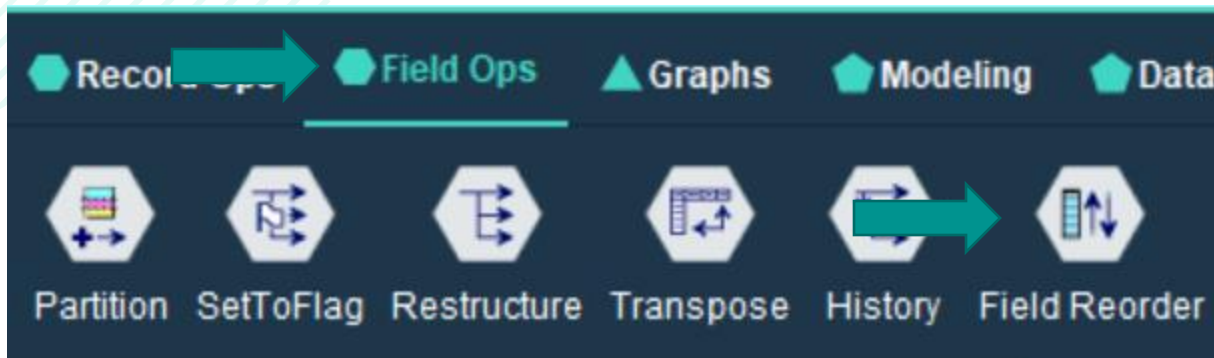
Tech Tips - Order Fields in a File in IBM SPSS Modeler

Tech Tips - Order Fields in a File in IBM SPSS Modeler



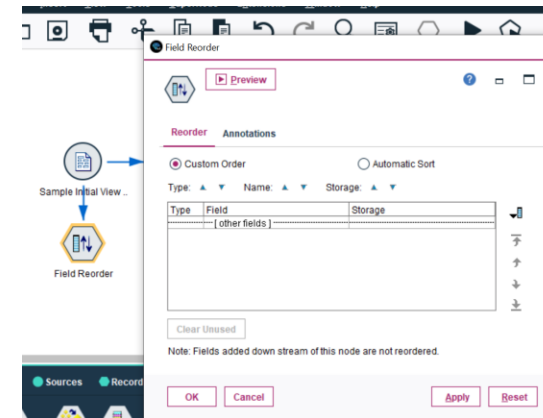
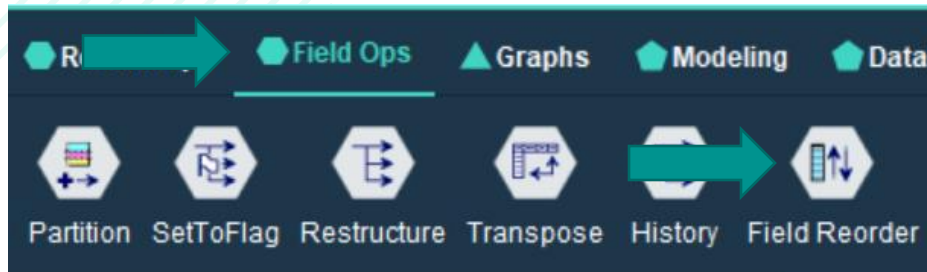
Tech Tips - Order Fields in a File

- Here's a quick tip to order fields in a data file in IBM SPSS Modeler.
- Sometimes, you want to order fields in a data file. For example, you want to focus on a few variables and you want to place these at the start of your file. These few variables may exist in a file with many variables so we want to make them easy to review.
- The **Field Reorder** node makes this quick and easy.
- The **Field Reorder** node can be found on the **Field Ops** palette.



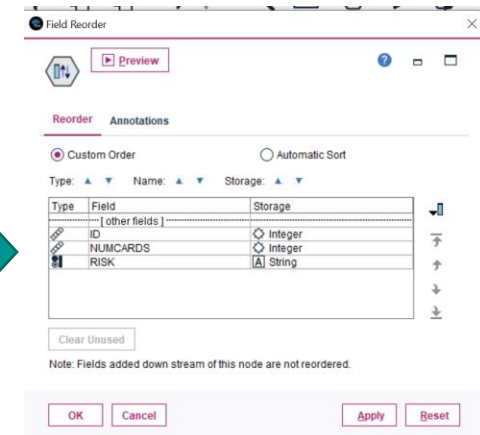
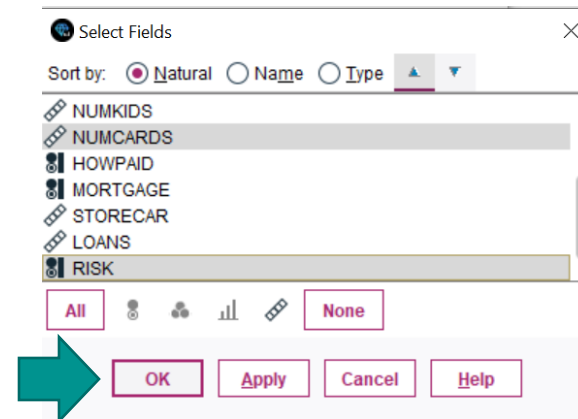
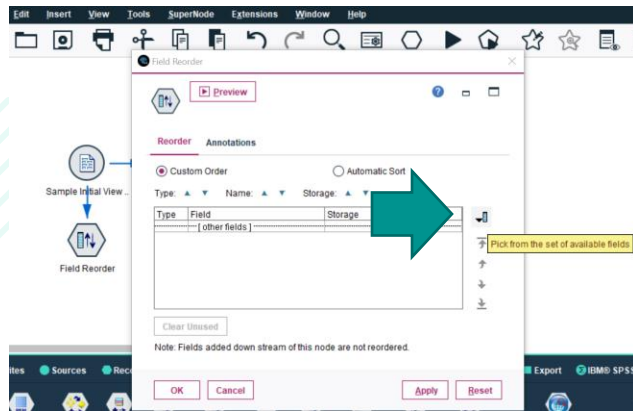
Tech Tips - Order Fields in a File

- To reorder fields in a data file go the **Field Ops** palette. Select the **Field Reorder** node and drag it onto the stream canvas. You can also double click the node to drop it onto the stream canvas. Once it is on the canvas you can connect it to your stream.
- Double click to open the node. The settings will allow you to determine field order in the file. In this case, we want to have the fields 'ID', NUMCARDS' and 'RISK' as the first three fields in the data file.



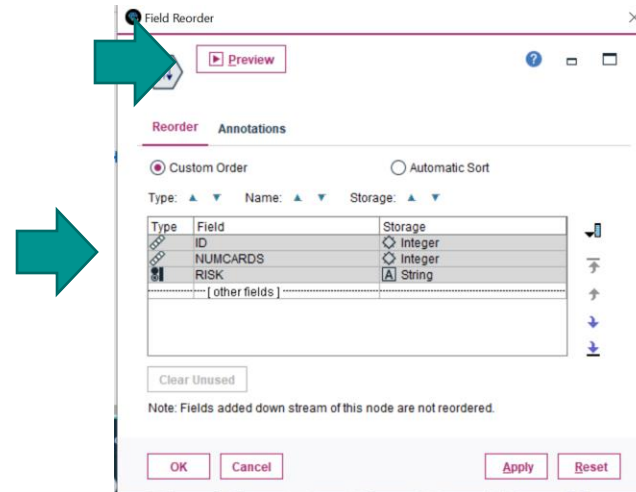
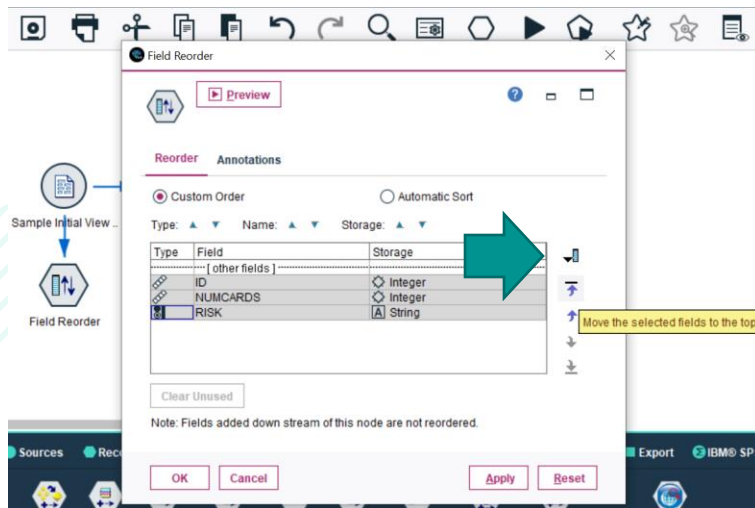
Tech Tips - Order Fields in a File

- To order the fields, use the field chooser drop down menu to select the three fields. Click to select each field and click **OK**. Once these fields have been selected they will appear in the **Field Reorder** list.



Tech Tips - Order Fields in a File

- To move the fields to the start of the data file, highlight all three and hit the arrow up button (move the selected fields to the top). Now these three fields will be the first three fields in your data file. You can click on the Preview button to check your data.



Preview from Field Reorder Node (12 fields, 10 records) #4

File Edit Generate

Table Annotations

	ID	NUMCARDS	RISK	AGE	INCOME	MARITAL	NUMKIDS	HOWPAID
1	100756	2	good risk	44	59944	married		1 monthly
2	100668	1	bad loss	35	59692	married		1 monthly
3	100416	2	bad loss	34	59463	married		0 monthly
4	100590	2	good risk	39	59393	married		0 monthly
5	100702	1	good risk	42	59201	married		0 monthly
6	100319	2	good risk	31	59193	married		1 monthly
7	100666	1	bad loss	28	59179	married		1 monthly
8	100389	1	good risk	30	59036	married		1 monthly
9	100758	1	bad profit	38	58914	married		0 monthly
10	100695	1	bad profit	36	58878	married		1 monthly

OK

SPSS Tech Tips

For more **Tech Tips**, go to the Tech Tips section within the Learning Hub.

Contact us



SPSSAdmin@version1.com



+ 44 (0) 203 859 4790
+ 353 (0) 1 865 7800



www.spssanalyticspartner.com



Thank you.