



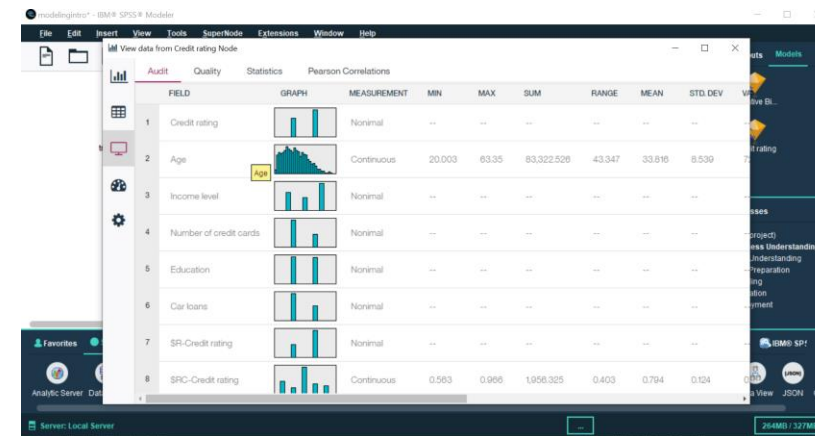
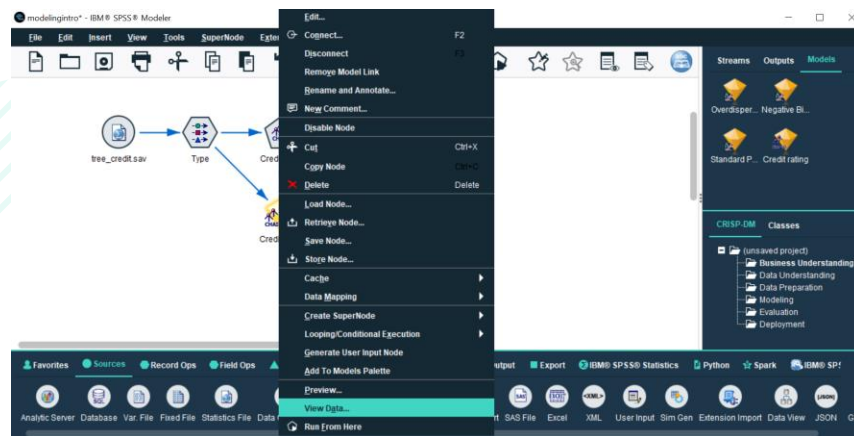
Tech Tips - Build a Quick Chart with View Data in IBM SPSS Modeler



Tech Tips - Build a Quick Chart with View Data in IBM SPSS Modeler

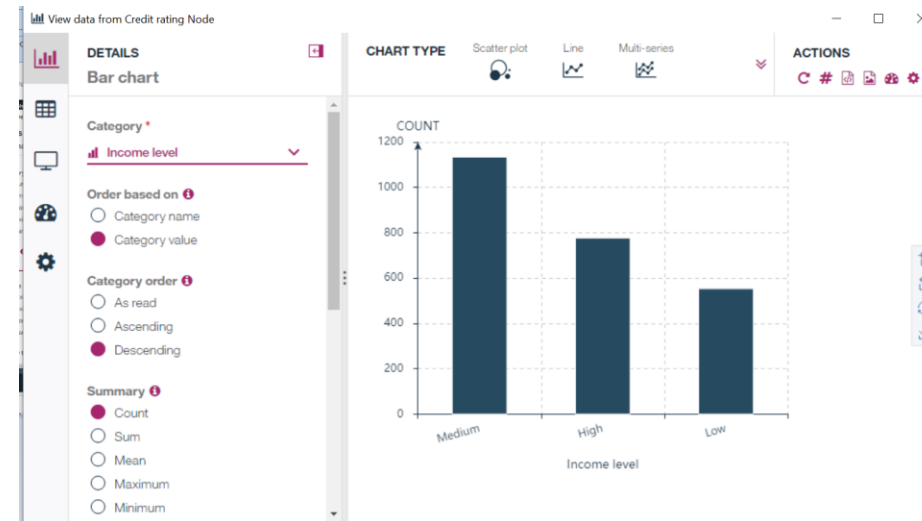
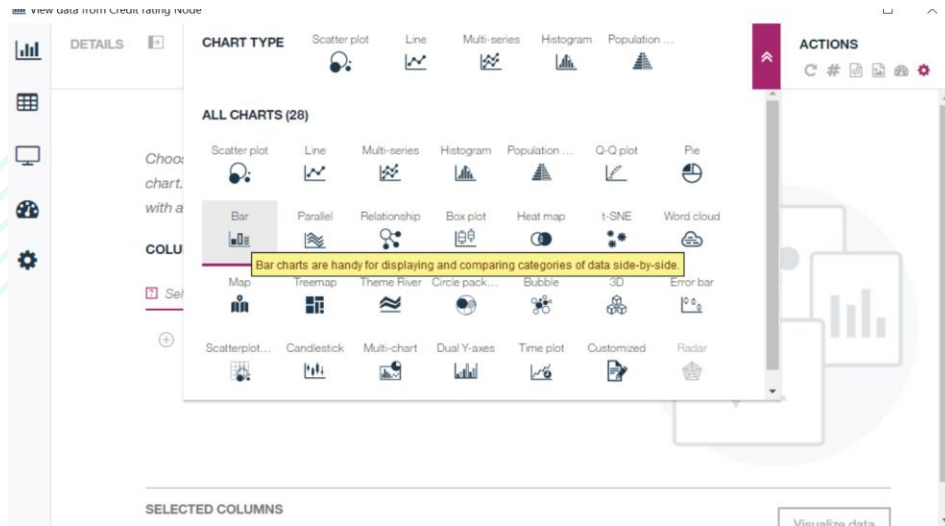
Tech Tips - Build a Quick Bar Chart with View Data

- Here's a quick tip to build a bar chart using View Data in IBM SPSS Modeler.
- Users can right click on a node in Modeler and select **View Data**. This opens a dashboard where users can create graphs, examine data in a spreadsheet, audit data, and use dashboard options.



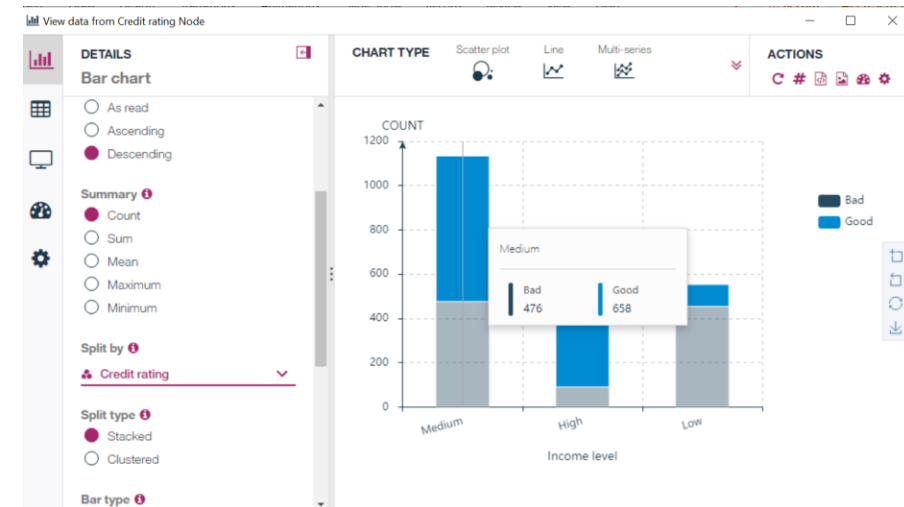
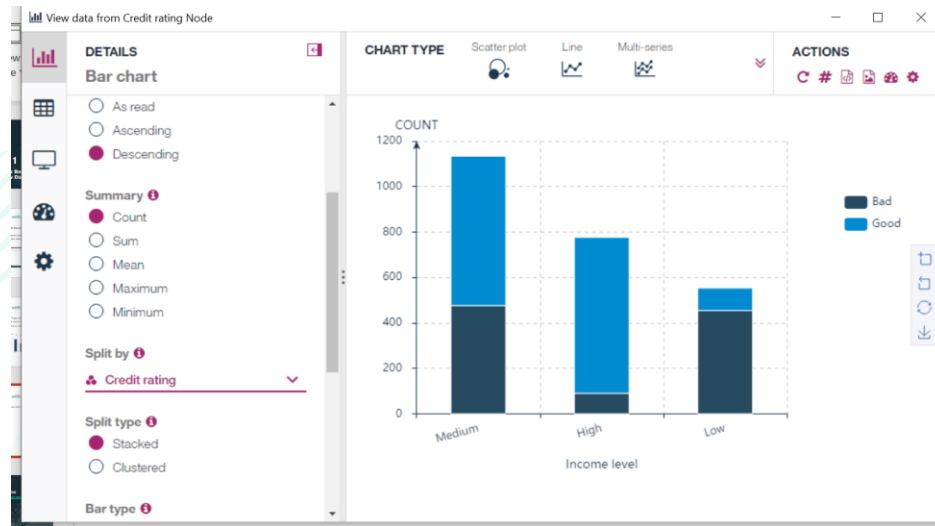
Tech Tips - Build a Quick Bar Chart with View Data

- We want to create a bar graph of **Income level** and **Credit rating**. Right click on a node in your stream and select **View Data**. Go to **Chart Type** chose and select a Bar Chart. Select **Income level** as the **Category Variable** and order based on category value.



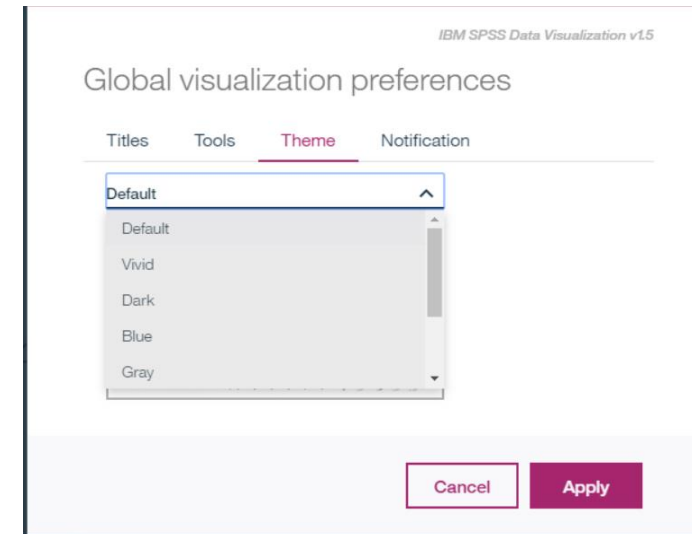
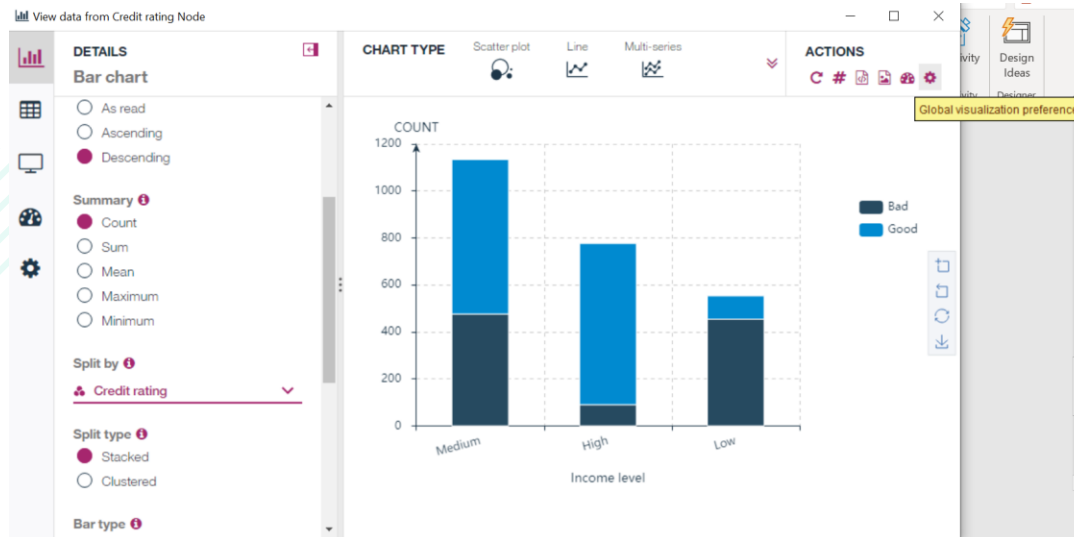
Tech Tips - Build a Quick Bar Chart with View Data

- Select **Category Order as Descending** and ask for **Count**. We can also split the bar chart by Credit Risk. Hovering your cursor over each bar gives information on credit risk in each income category.



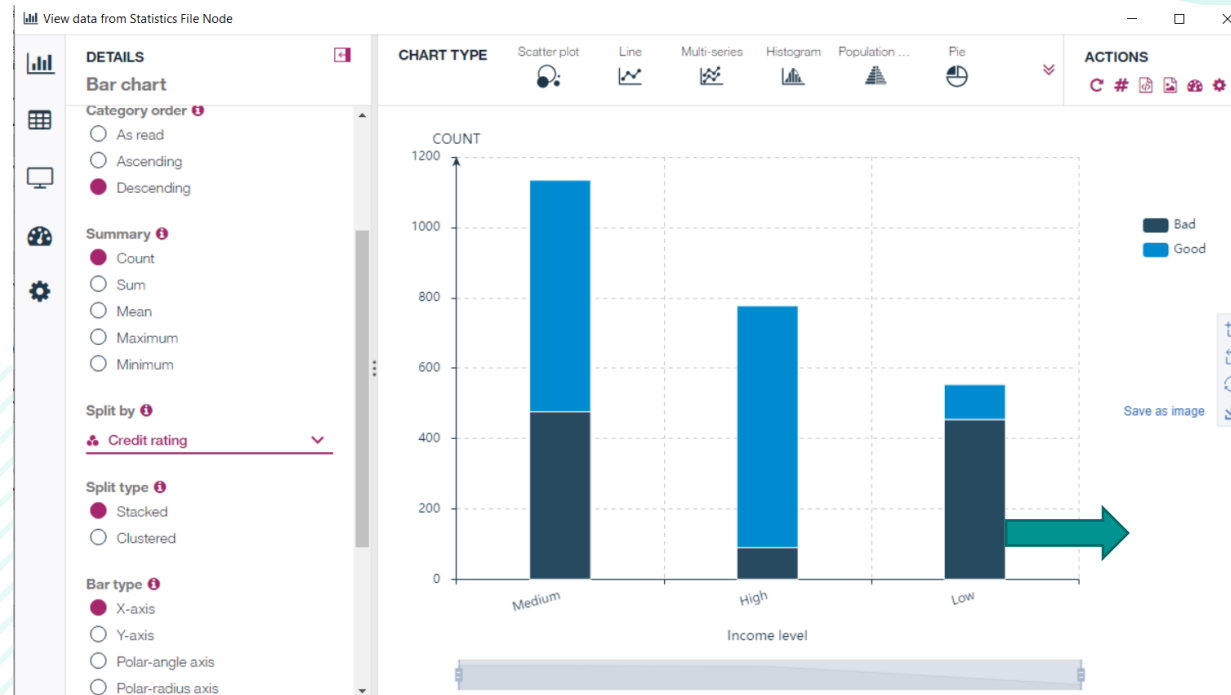
Tech Tips - Build a Quick Bar Chart with View Data

- Select the **Global visualizations preferences** button. Users can add a title, select tools, and select a theme.



Tech Tips - Build a Quick Bar Chart with View Data

- Users can download the image by selecting the **Save as Image** button to the right of the image.



SPSS Tech Tips

For more **Tech Tips**, go to the Tech Tips section within the Learning Hub.

Contact us



SPSSAdmin@version1.com



+ 44 (0) 203 859 4790
+ 353 (0) 1 865 7800



www.spssanalyticspartner.com



Thank you.