



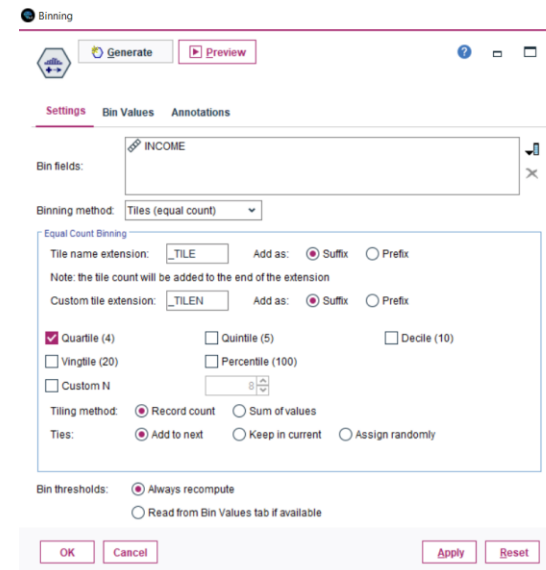
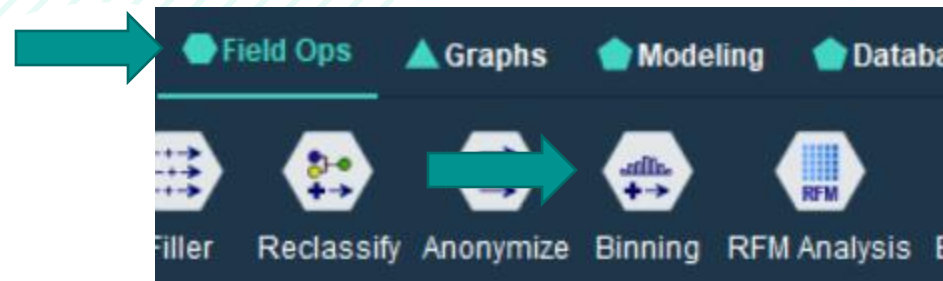
Tech Tips - Bin Data in IBM SPSS Modeler



Tech Tips - Bin Data in IBM SPSS Modeler

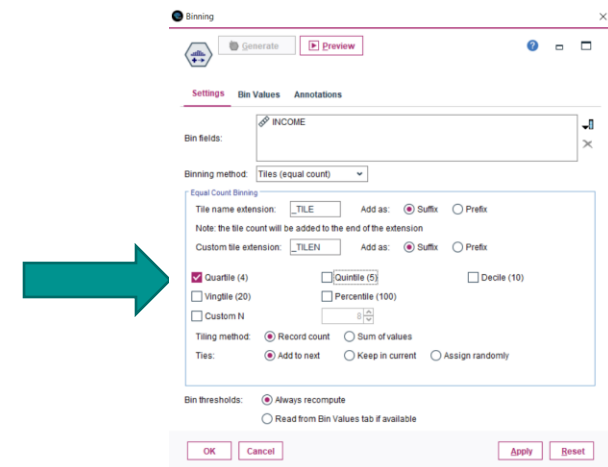
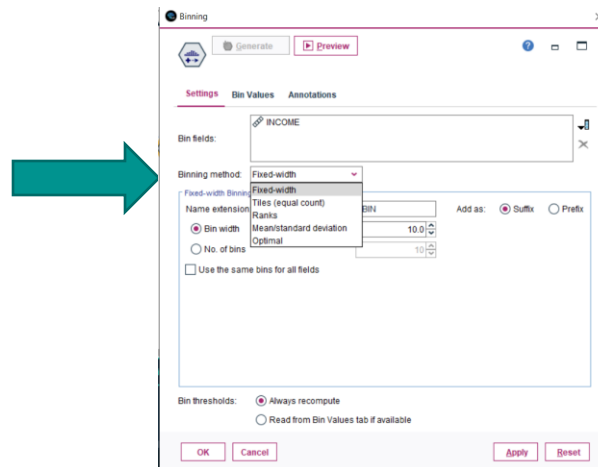
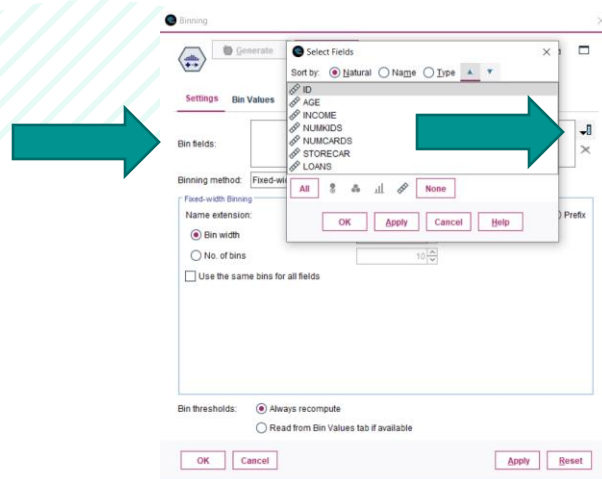
Tech Tips - Bin Data

- Here's a quick tip to bin or group your data in IBM SPSS Modeler.
- Sometimes you have numeric data that you want to split into groups. For example, we want to split income into tiles so that we can use it in modelling.
- The **Binning** node makes grouping data easy and is located on the **Field Ops** palette.



Tech Tips - Bin Data

- To bin or group data go to the **Field Ops** palette. Select the **Binning** node and drag it onto the stream canvas. You can also double click the node to drop it onto the stream canvas. Once it is on the canvas you can connect it to your stream.
- Double click to open the node. Use the **Bin fields** drop down to select the field to bin. Select the binning method. Here we selected tiles and quartiles.



Tech Tips - Bin Data

- Click on the **Bin Values** tab and click **Read Values** so that you can see how the data will be binned. Click **OK**. The new binned field will be available in your data set. Click on **Preview** to see your new field.

The first screenshot shows the 'Binning' dialog box with the 'Bin Values' tab selected. A teal arrow points to the 'Read Values' button. The second screenshot shows the 'Binning' dialog box with the 'Preview' button highlighted. A teal arrow points to the 'Preview' button. The third screenshot shows a preview window titled 'Preview from Binning Node (13 fields, 10 records) #1' containing a table of data with columns: CARDS, HOWPAID, MORTGAGE, STORECAR, LOANS, RISK, and INCOME_TILE4. A teal arrow points from the 'Preview' button in the second screenshot to the preview window.

	CARDS	HOWPAID	MORTGAGE	STORECAR	LOANS	RISK	INCOME_TILE4	
1	2	monthly	y		2	0	good risk	
2		1	monthly	y		1	0	bad loss
3	2	monthly	y		1	1	bad loss	
4	2	monthly	y		1	0	good risk	
5	1	monthly	y		2	0	good risk	
6	2	monthly	y		1	1	good risk	
7	1	monthly	y		2	1	bad loss	
8	1	monthly	y		2	1	good risk	
9	1	monthly	y		1	1	bad profit	
10	1	monthly	y		1	0	bad profit	

SPSS Tech Tips

For more **Tech Tips**, go to the Tech Tips section within the Learning Hub.

Contact us



SPSSAdmin@version1.com



+ 44 (0) 203 859 4790
+ 353 (0) 1 865 7800



www.spssanalyticspartner.com



Thank you.