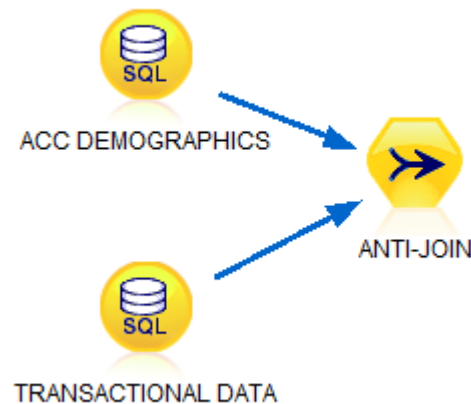


Finding non-matching records in IBM SPSS Modeler

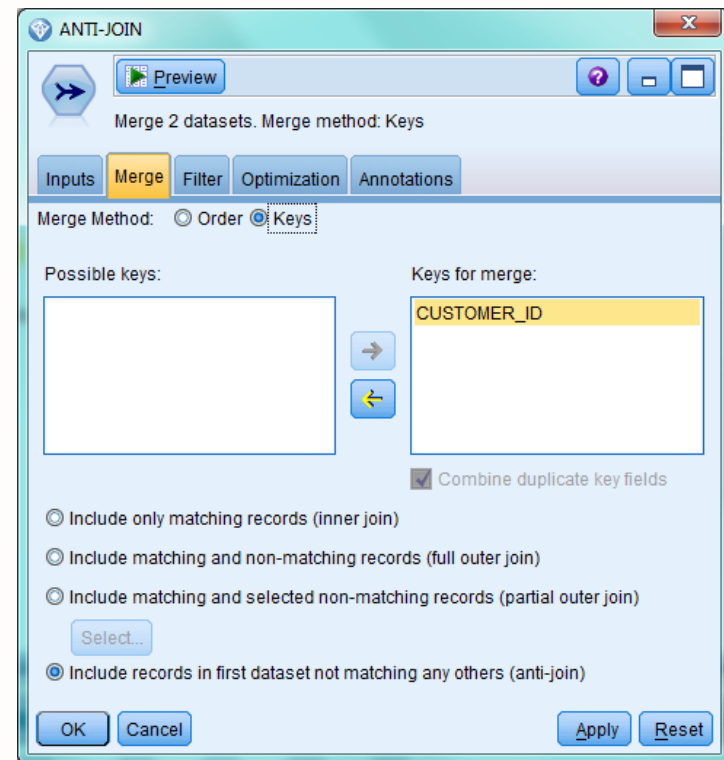
Finding non-matching records

- You might want to identify individuals who are only present in one file and not another
- You might have 2 customer information tables e.g. One with account demographic information and one with transactional information and you want to identify ID's that are only in one table and not another !



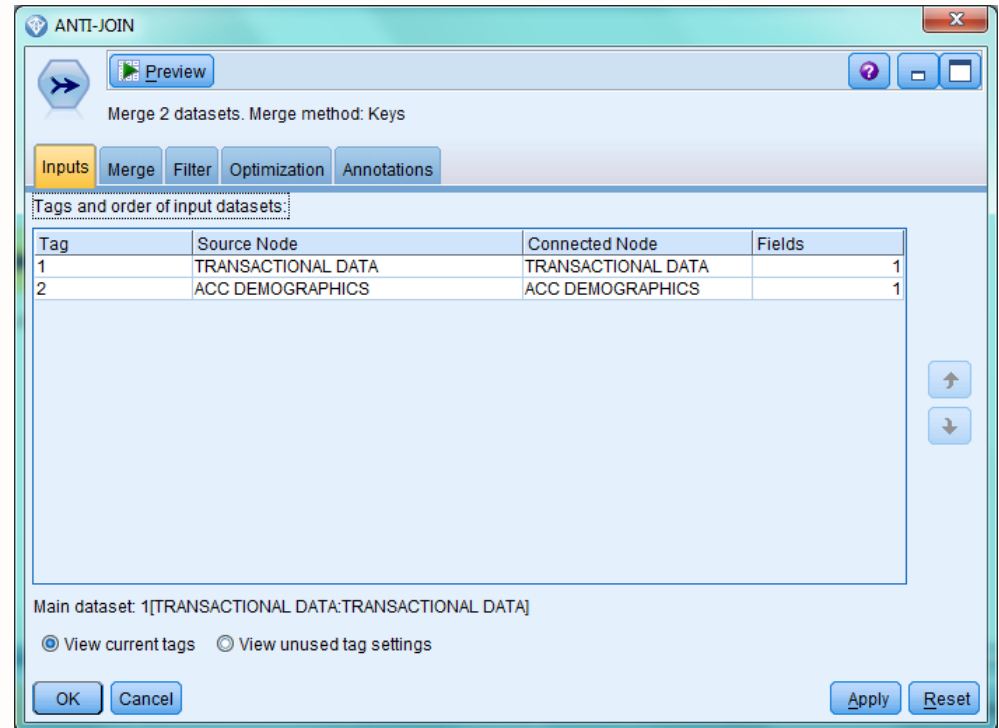
How to find non-matching records

- Easily achieved using the Merge Node
- Select the Key for Merge
- Specify **anti-join** option



Order of the Inputs – N.B

- Order of the inputs important !
- Which ever source is specified as Tag1 is the first dataset



**For more Tech Tips
visit**

www.presidion.com/ibm-spss-technical-tips

www.presidion.com

Talk to us

✉ info@presidion.com ☎ +44 (0)208 757 8820 (UK) ☎ +353 (0)1 415 0234 (IRL)

