



Authorised User License Installation for IBM SPSS Modeler 18.3

@Copyright 2022 Version 1 – All Rights Reserved

Company Classification: Client Confidential



Contents

- 1. INTRODUCTION 3**
- 2. DOWNLOADING IBM SPSS MODELER 18.3 4**
- 3. INSTALLATION OF MODELER 18.3 6**
- 4. LICENSING IBM SPSS MODELER 18.3 9**
- 5. APPLYING FIX PACKS 12**

1. . INTRODUCTION

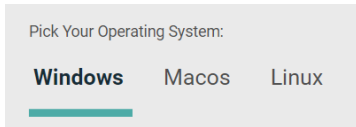
These instructions are for installing the IBM SPSS Modeler 18.3 Site License for Windows desktop computers. A site license allows you to install IBM SPSS Modeler 18.3 for Windows on as many computers as the number of licenses you purchased. You will need your authorisation code to be able to license the IBM SPSS Modeler 18.3 Site License. To install, you must be logged on to your computer with administrator privileges

2. 2. DOWNLOADING IBM SPSS MODELER 18.3

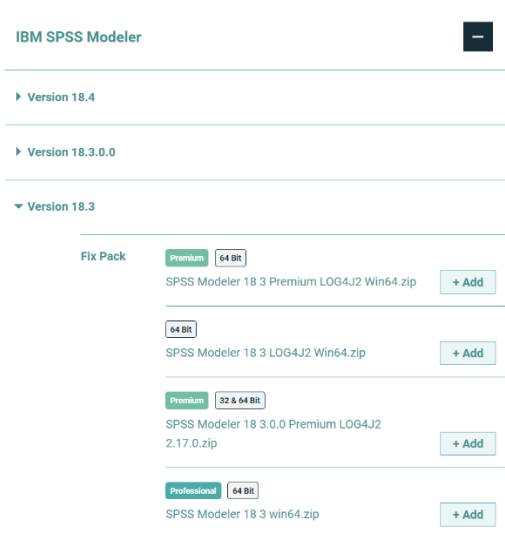
2.1 Please follow the below link to download the version of IBM SPSS Statistics:

[SPSS Customer Portal | SPSS Analytics Partner](#)

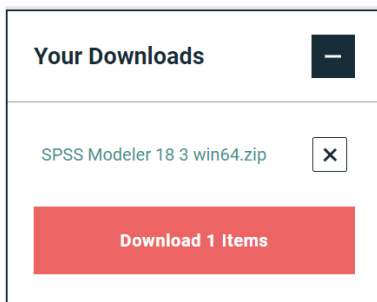
2.2 Scroll down and select your Operating System.



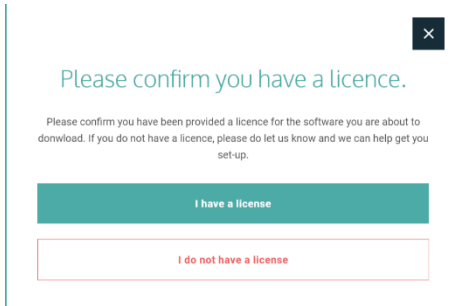
2.3 Expand IBM SPSS Modeler. Select the software you need and click Add.



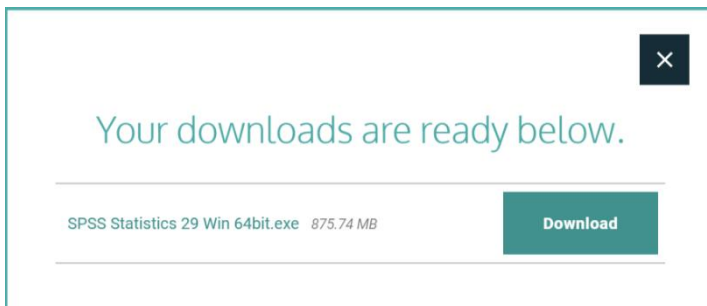
2.4 You selection will appear in the 'Your Downloads' section to the right. Select Download.



2.5 Confirm that you have a license.

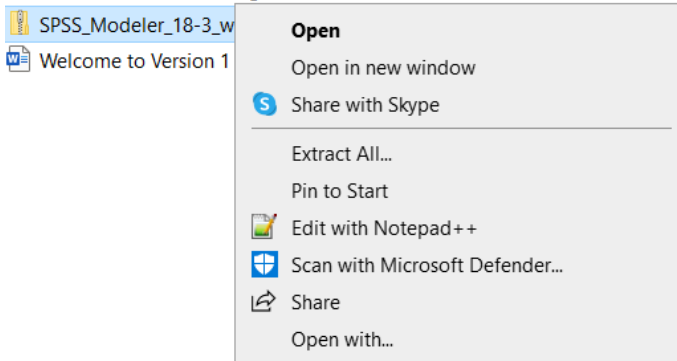


2.6 You will receive a message that your download(s) are ready. Click the Download button to download the software.

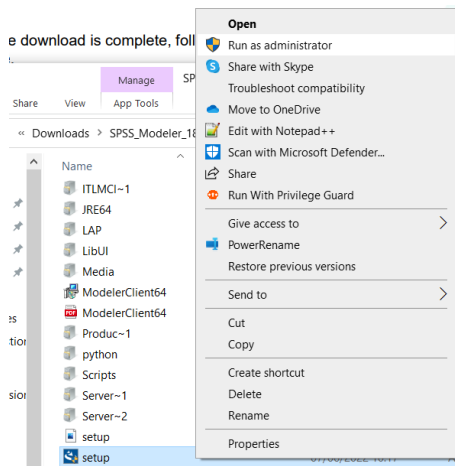


3. 3. INSTALLATION OF MODELER 18.3

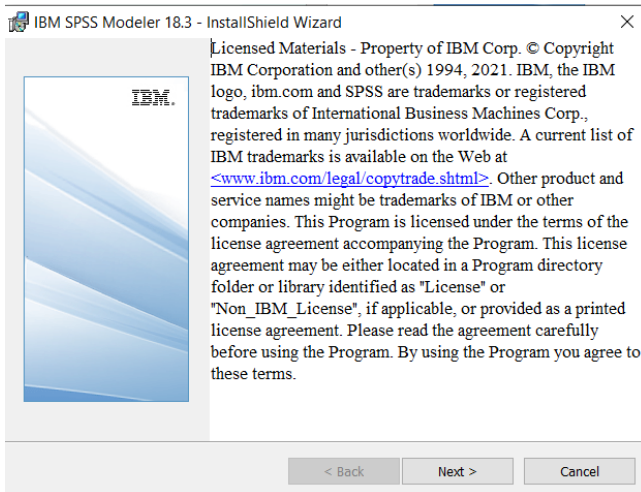
1. Once the download is complete, extract the SPSS Modeler zip file.



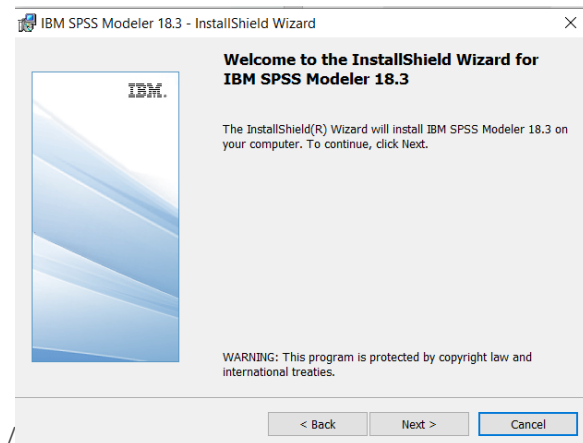
2. Find the setup.exe file and select 'Run as administrator' if possible.



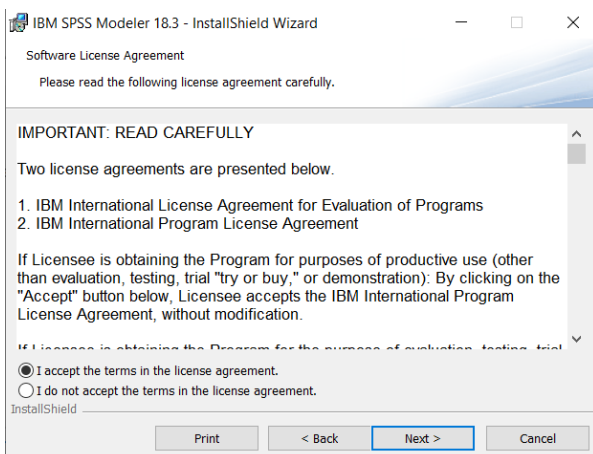
3. Click 'Next'.



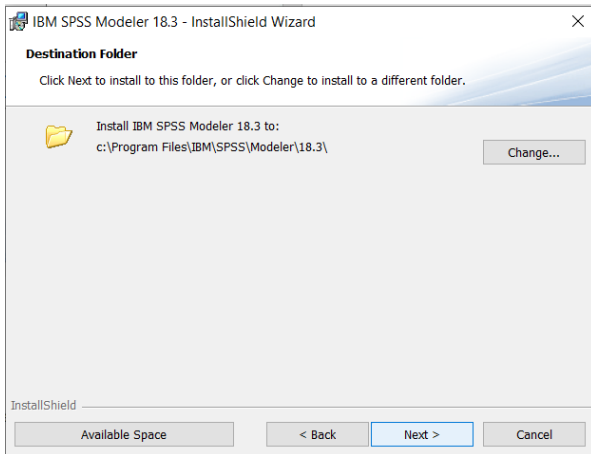
4. Click 'Next'.



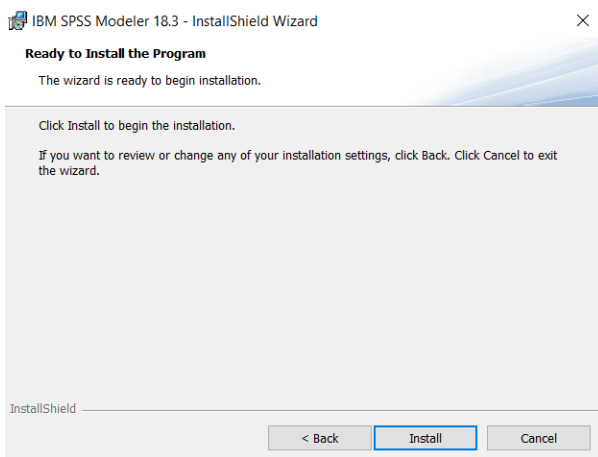
5. Accept the license agreement and click 'Next'.



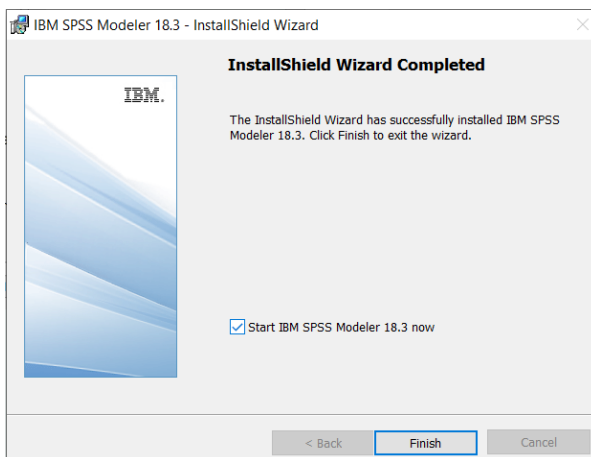
6. Modeler will be installed to a default location. To change this location, select 'Change...'



7. Click 'Install' to begin the installation.



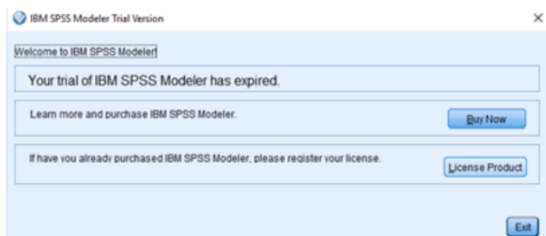
8. Click Finish to complete the installation.



4. 4. LICENSING IBM SPSS MODELER 18.3

1. SPSS Modeler 18.3 is licenced through the Licence Authorisation Wizard which can be opened in a number of ways.

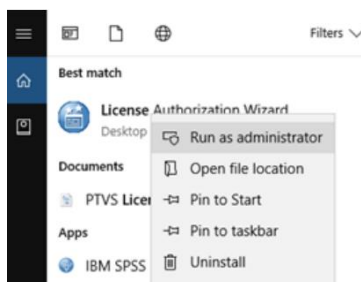
A.) If you chose to 'Start IBM SPSS Modeler 18.3 now' by ticking the box in the last step, you will get the screen below.



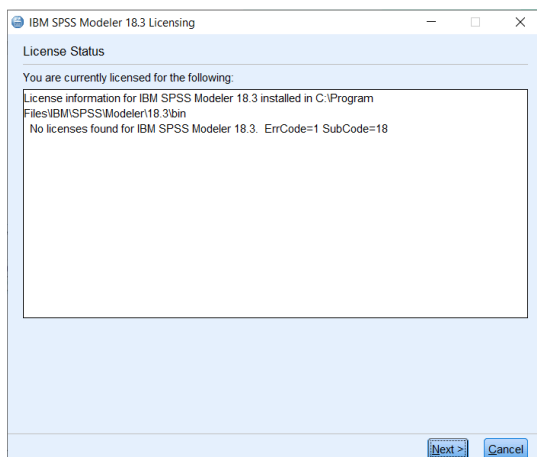
Please follow step 2 on part B below to license your product.

OR

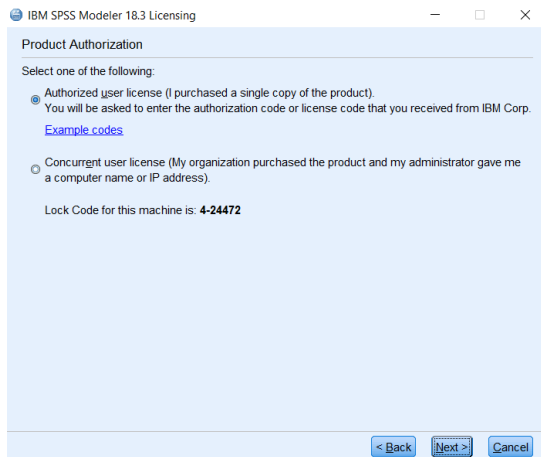
B.) If you have a desktop Version of IBM SPSS Modeler 18.3 and you are licensing your own machine and have access to both admin rights and your Authorization code, please choose 'Authorized User License' and 'Next'.



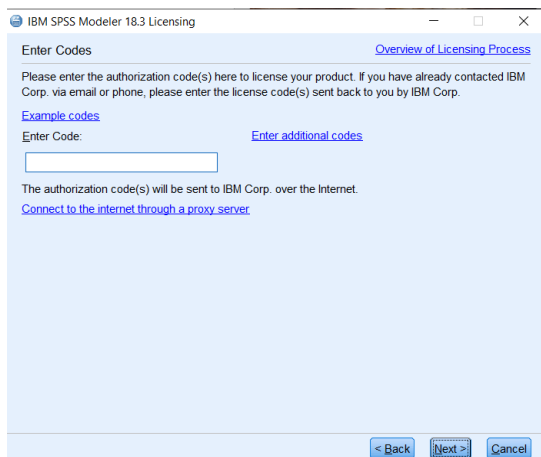
2. You will now be presented with this screen. Click 'Next'.



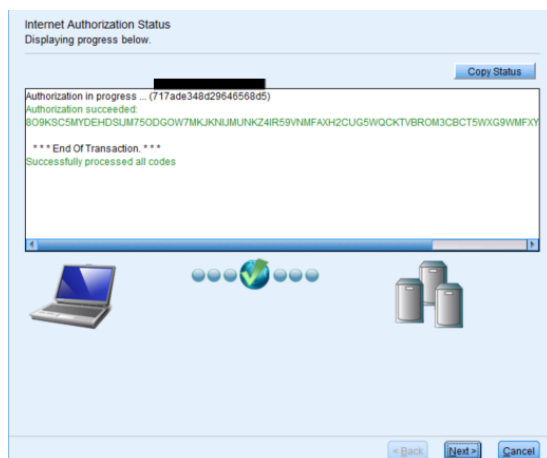
- If you have a desktop Version of IBM SPSS Modeler 18.3 and you are licencing on your own machine and have access to both admin rights and your Authorisation Code, please choose 'Authorized User Licence' and 'Next'.



- Please copy and paste your Authorisation Code into the space provided and click 'Next'.



- If the licencing has been successful, you will see the screen below.



- As the image below states, your IBM SPSS Modeler 18.3 will now be fully licenced when you open it next. You can click 'Finish' and restart your computer for the licencing to be fully activated.

Licensing Completed
You have successfully licensed your Product.
Your license is effective the next time you start your product.

5. APPLYING FIX PACKS

You will want to ensure that you apply any necessary fix packs at the latest fix pack level. Fix packs can be downloaded at [SPSS Customer Portal | SPSS Analytics Partner](#).

Please ensure that you complete all pre-installation and post-installation tasks as described in the fix pack instructions.



Thank you

Contact:

w: version1.com

e: info@version1.com