



Installation and Licensing Guide for IBM SPSS Modeler 18.3

@Copyright 2022 Version 1 – All Rights Reserved



Contents

- 1. INTRODUCTION 3**
- 2. DOWNLOADING IBM SPSS MODELER 18.3 4**
- 3. INSTALLATION OF MODELER 18.3 6**
- 4. LICENSING IBM SPSS MODELER 18.3 9**

1. INTRODUCTION

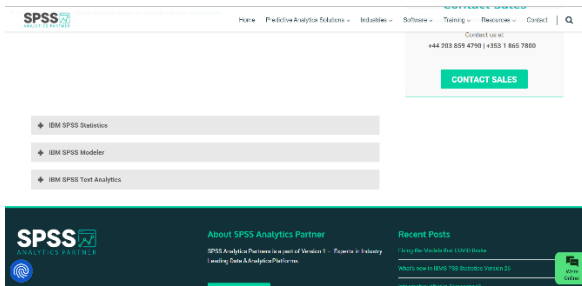
These instructions are for installing the IBM SPSS Modeler 18.3 Site License for Windows desktop computers. A site license allows you to install IBM SPSS Modeler 18.3 for Windows on as many computers as the number of licenses you purchased. You will need your authorisation code to be able to license the IBM SPSS Modeler 18.3 Site License. To install, you must be logged on to your computer with administrator privileges

2. DOWNLOADING IBM SPSS MODELER 18.3

1. To download your software, go to the Version 1 SPSS Customer Portal. The link is shown below.

[SPSS Customer Portal | SPSS Analytics Partner](#)

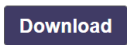
2. Once on the SPSS Customer Portal page, scroll to the bottom of the window. You will see that there are three bars for Statistics, Modeler and Text Analytics. Click to expand IBM SPSS Modeler.



3. Once the IBM SPSS Modeler section is open, tick the version of Modeler you are licensed for.

Modeler 18-3 Win 64bit	zip	<input type="checkbox"/>
Modeler 18-3 Mac pkg	pkg	<input type="checkbox"/>
Modeler 18-3 Premium Win 64bit	zip	<input checked="" type="checkbox"/>

4. Click on the 'Download' button at the bottom.



5. You will be asked to provide your information. Once you have done this click 'Download'.

You have selected to download the following files:
Amos 28 Win

Download your IBM SPSS Software

Email:

First Name:

Last Name:

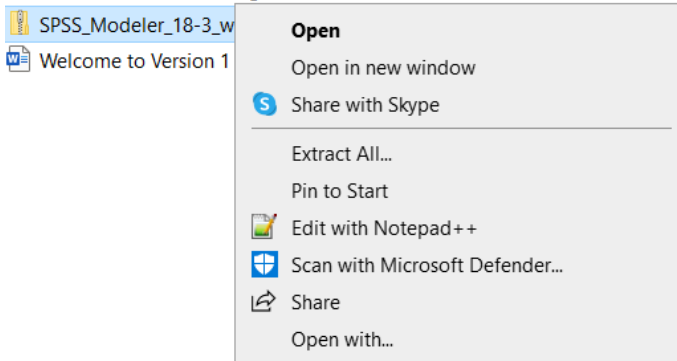
Job Title:

Organisation:

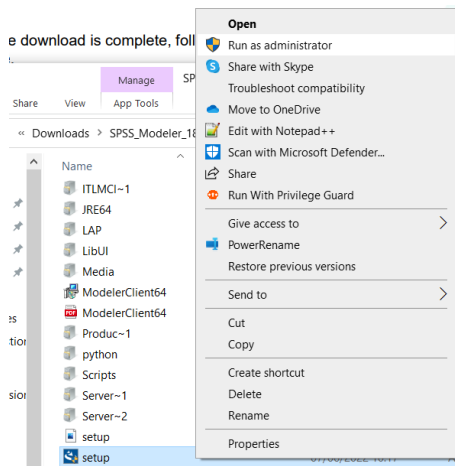
6. Once you have provided your details and selected Download, a link is generated that is sent to your email. You will need to check your email and click the link to start downloading the version of IBM SPSS Modeler selected.

3. INSTALLATION OF MODELER 18.3

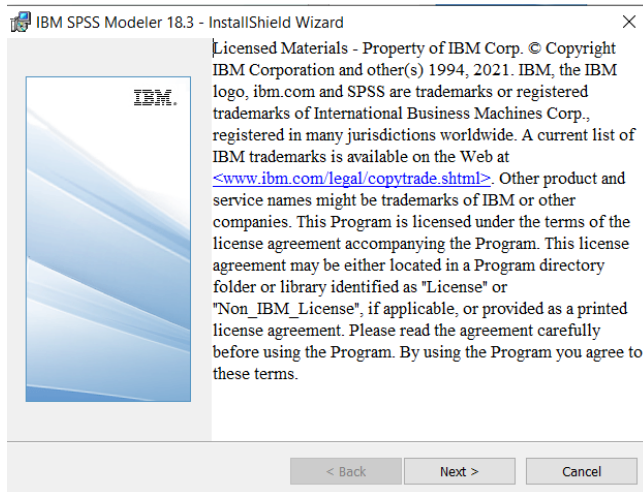
1. Once the download is complete, extract the SPSS Modeler zip file.



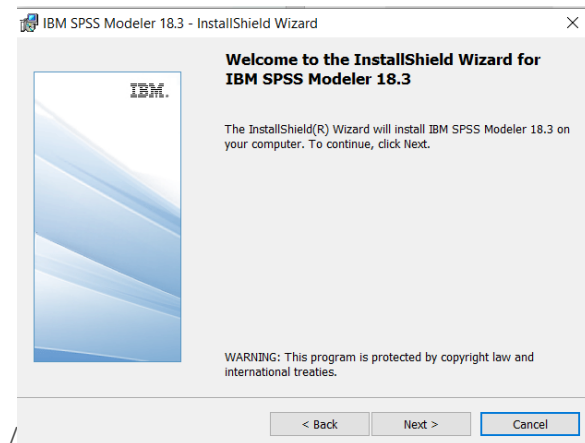
2. Find the setup.exe file and select 'Run as administrator' if possible.



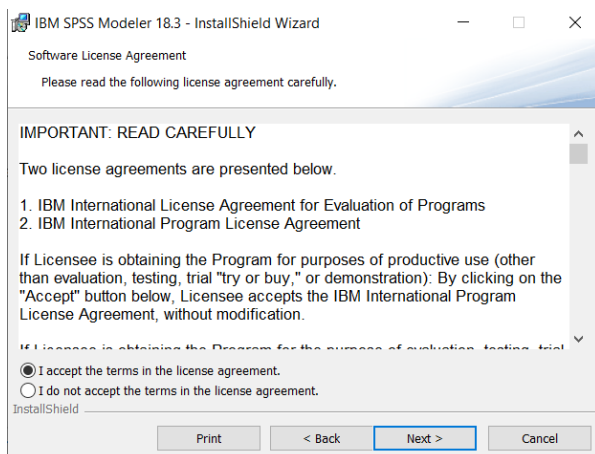
3. Click 'Next'.



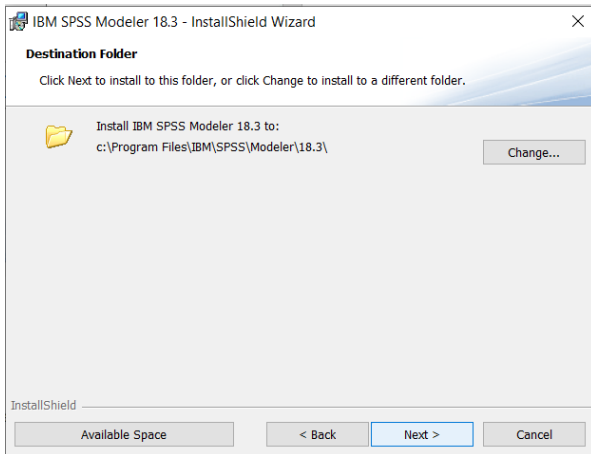
4. Click 'Next'.



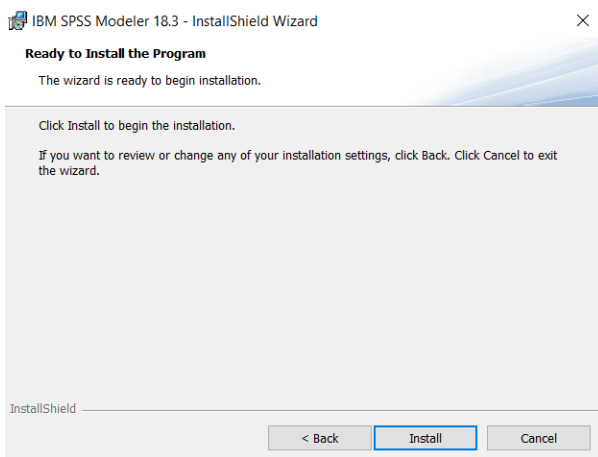
5. Accept the license agreement and click 'Next'.



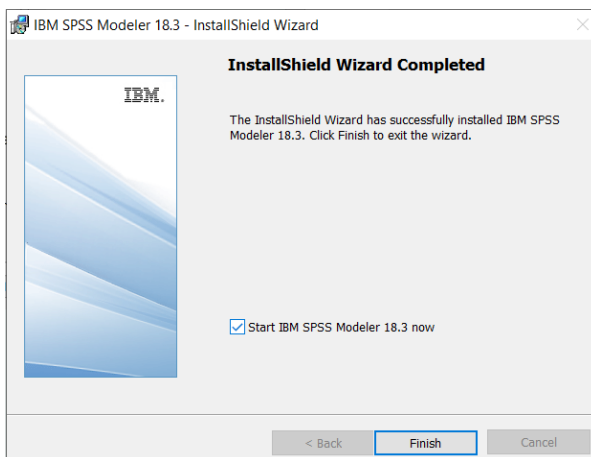
6. Modeler will be installed to a default location. To change this location, select 'Change...'



7. Click 'Install' to begin the installation.



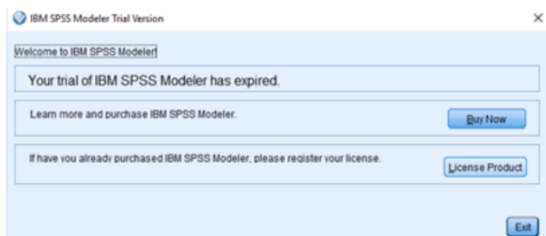
8. Click Finish to complete the installation.



4. LICENSING IBM SPSS MODELER 18.3

1. SPSS Modeler 18.3 is licenced through the Licence Authorisation Wizard which can be opened in a number of ways.

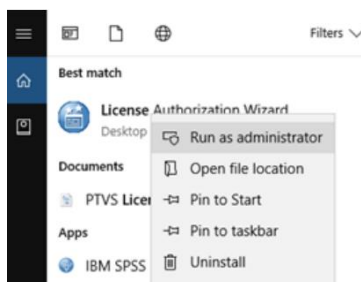
A.) If you chose to 'Start IBM SPSS Modeler 18.3 now' by ticking the box in the last step, you will get the screen below.



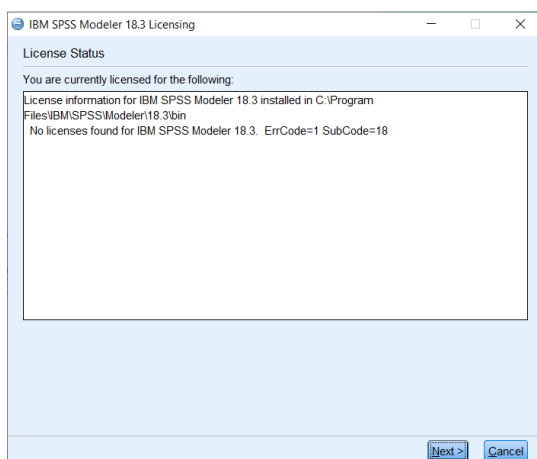
Please follow step 2 on part B below to license your product.

OR

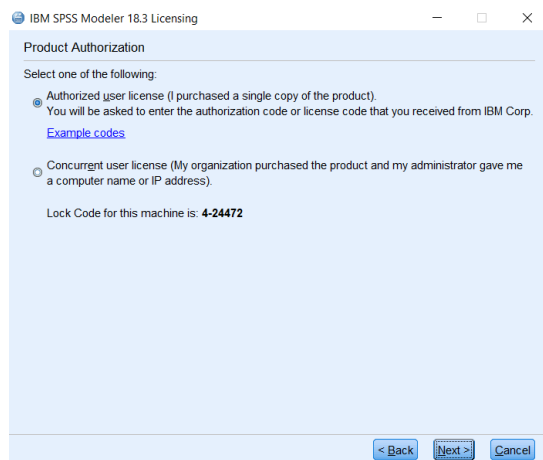
B.) If you have a desktop Version of IBM SPSS Modeler 18.3 and you are licensing your own machine and have access to both admin rights and your Authorization code, please choose 'Authorized User License' and 'Next'.



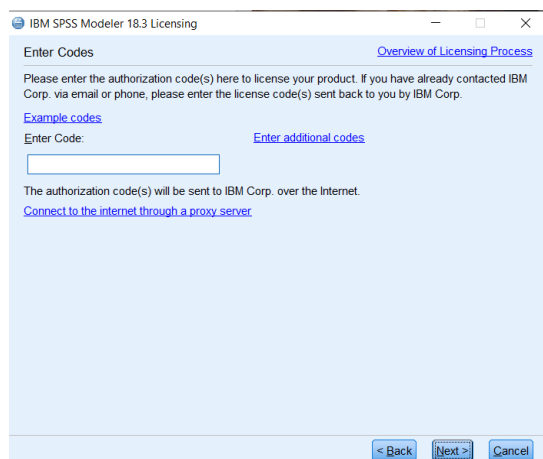
2. You will now be presented with this screen. Click 'Next'.



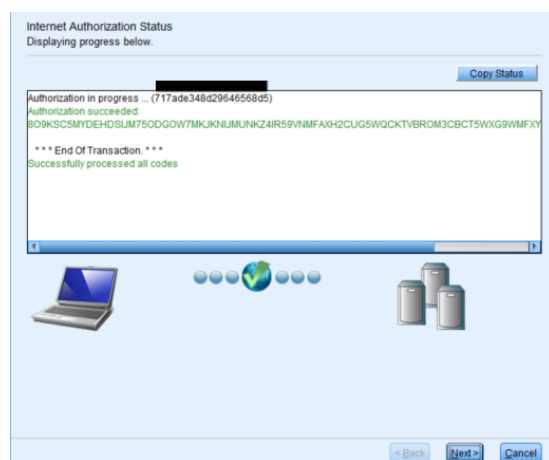
- If you have a desktop Version of IBM SPSS Modeler 18.3 and you are licencing on your own machine and have access to both admin rights and your Authorisation Code, please choose 'Authorised User Licence' and 'Next'.



- Please copy and paste your Authorisation Code into the space provided and click 'Next'.



- If the licencing has been successful, you will see the screen below.



- As the image below states, your IBM SPSS Modeler 18.3 will now be fully licenced when you open it next. You can click 'Finish' and restart your computer for the licencing to be fully activated.

Licensing Completed
You have successfully licensed your Product.
Your license is effective the next time you start your product.



Thank you

Contact:

w: version1.com

e: info@version1.com