



VERSION 1

Installation and Licensing
Guide for IBM SPSS
Modeler 18.2.1

@Copyright 2019 Version 1 – All Rights Reserved

TABLE OF CONTENTS

1.INTRODUCTION	2
2.INSTALLING IBM SPSS MODELER VERSION 18.1 SOFTWARE	3
3. LICENSING YOUR IBM SPSS MODELER VERSION 18.1 SOFTWARE	7



1. Introduction

These instructions are for installing the IBM SPSS Modeler 18.2.1 Site License for Windows desktop computers. A site license allows you to install IBM SPSS Modeler 18.2.1 for Windows on as many computers as the number of licenses you purchased. You will need your authorisation code to be able to license the IBM SPSS Modeler 18.2.1 Site License. To install, you must be logged on to your computer with administrator privileges.

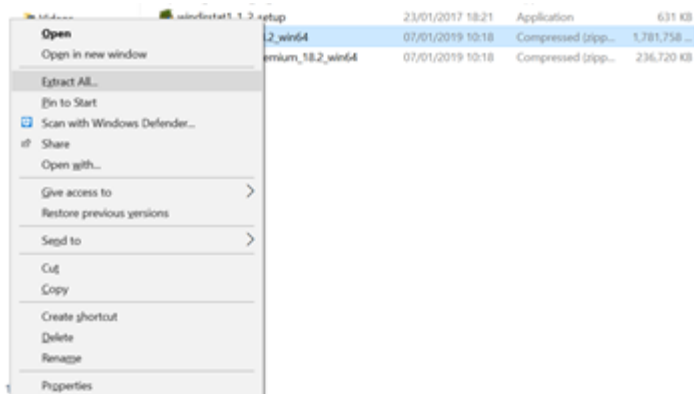
2. Installing IBM SPSS Modeler Version 18.2.1 Software

Please follow the below link to download the version of IBM SPSS Modeler:

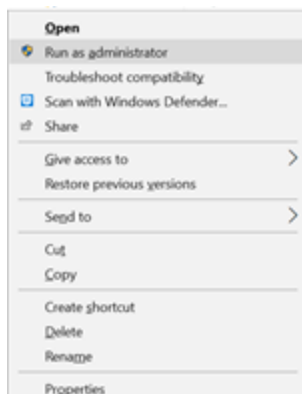
<http://www.spssanalyticspartner.com/supportdownloads/ibm-spss-customer-downloads>

1b) Once you select the version of IBM SPSS Modeler, you will need to enter your details after which you submit, it will generate a link that is sent to your email. You will need to check your email and click the link to start downloading the version of IBM SPSS Modeler selected.

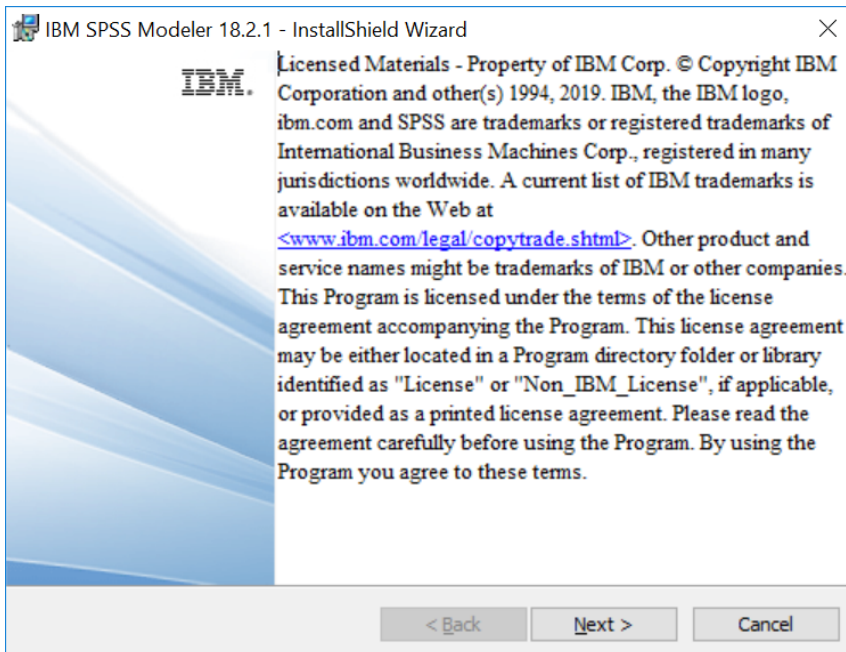
1c) Once the download is complete, follow the steps: Extract the SPSS Modeler zip file.



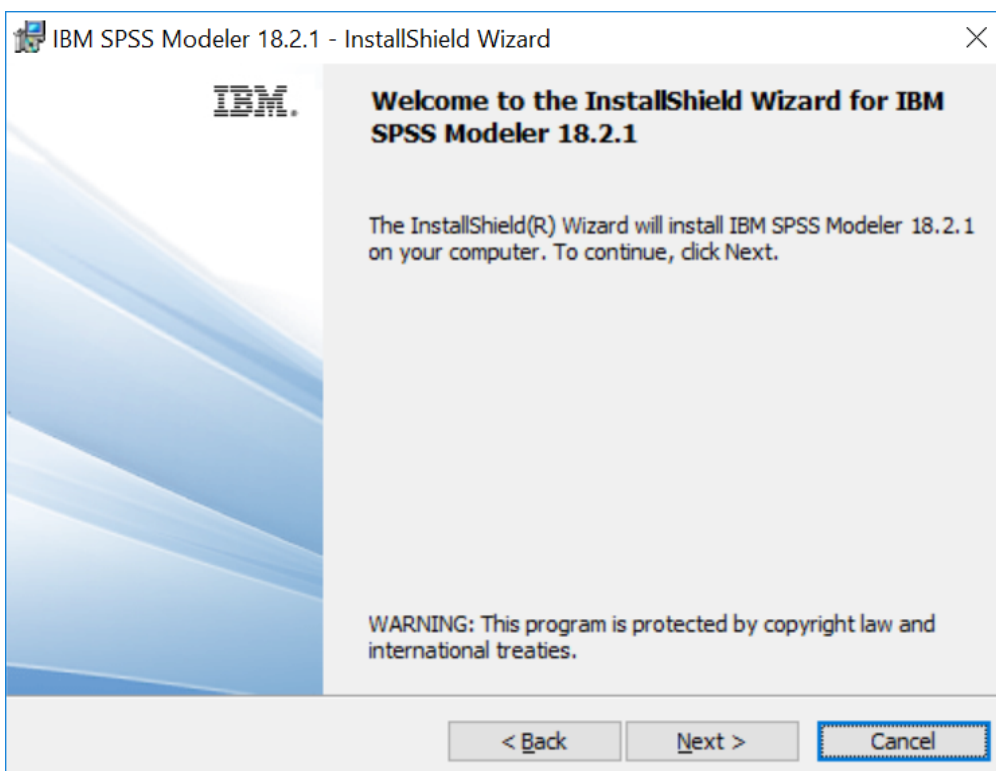
1d) Once the download is complete, follow the below steps: Select “Run as administrator” if possible.



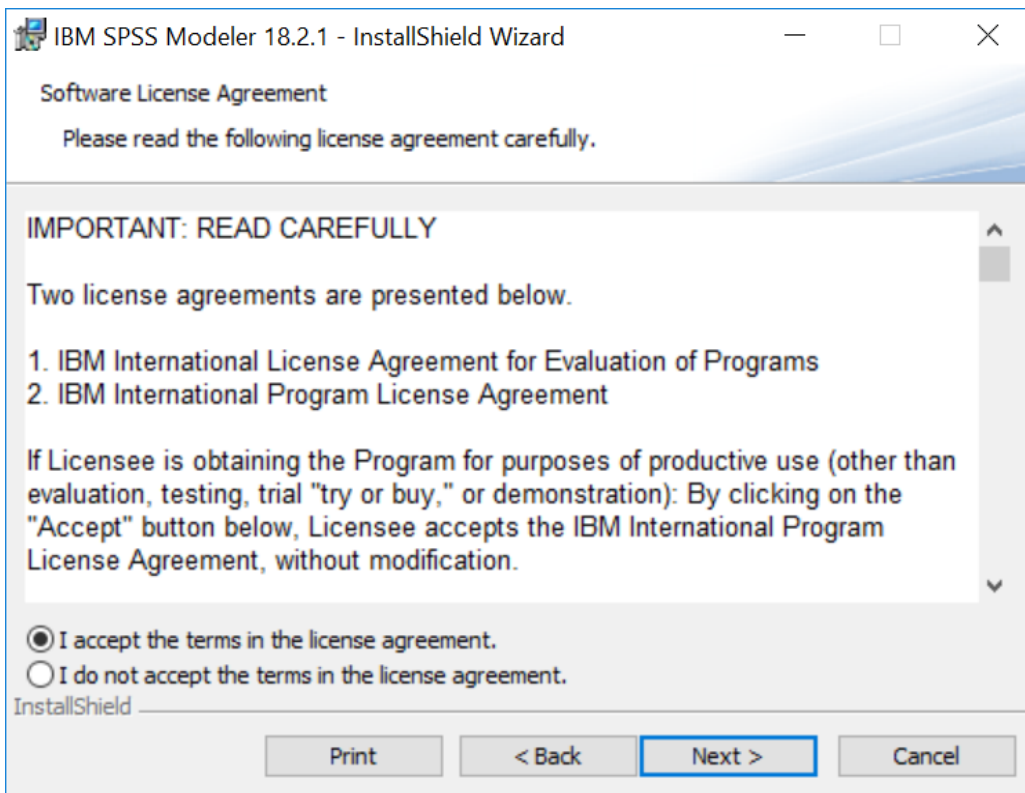
2. Click on “Next.”



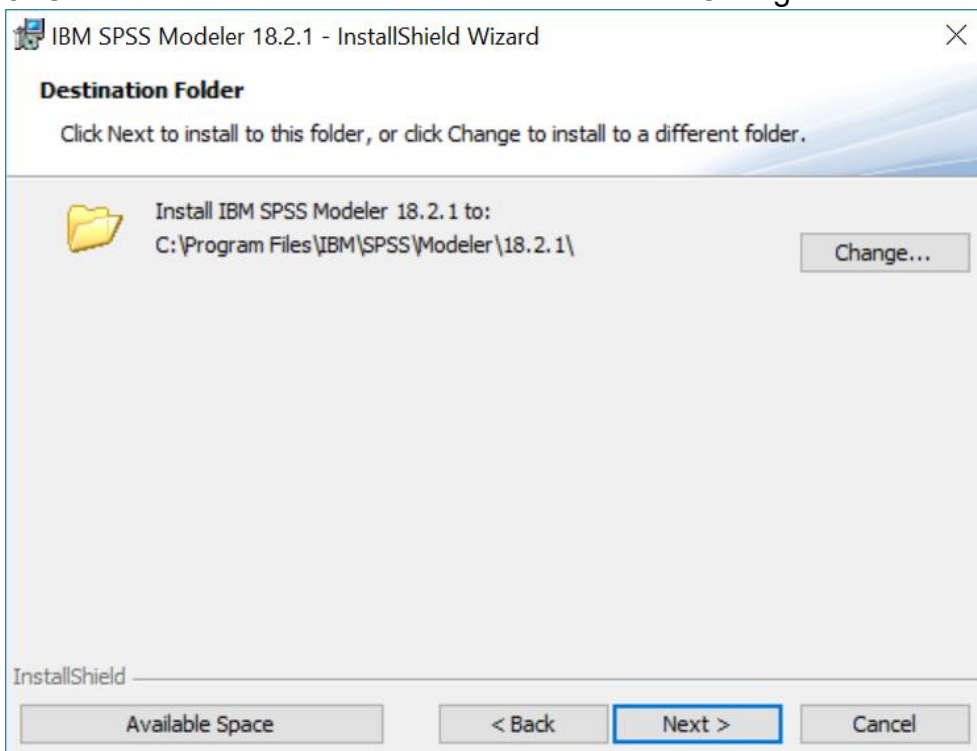
3. Click on “Next.”



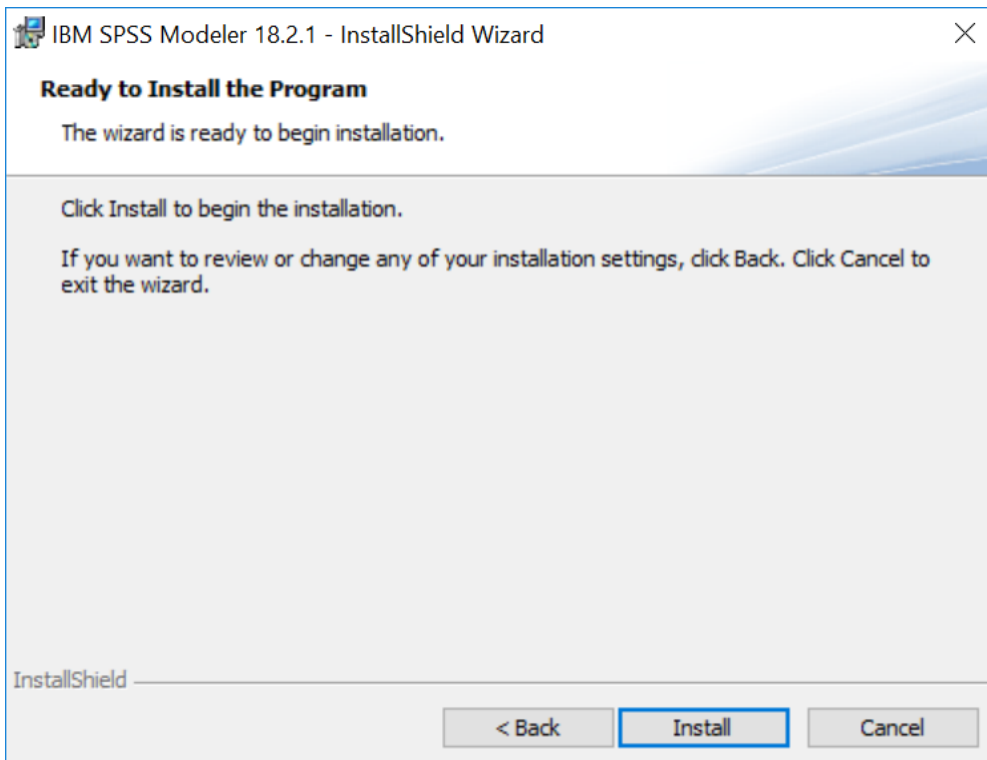
4. Accept the below License Agreement and click on “Next.”



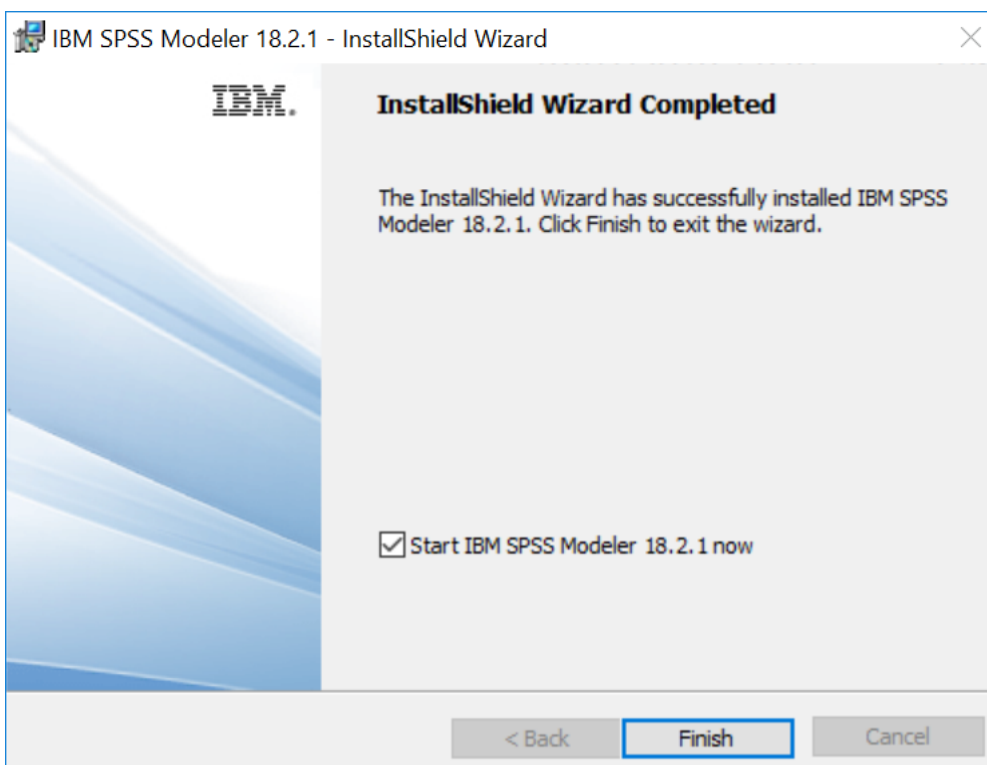
5. Go ahead with the default location or click on “Change...” to save another location.



6. If you are happy with your settings please select “Install” below:



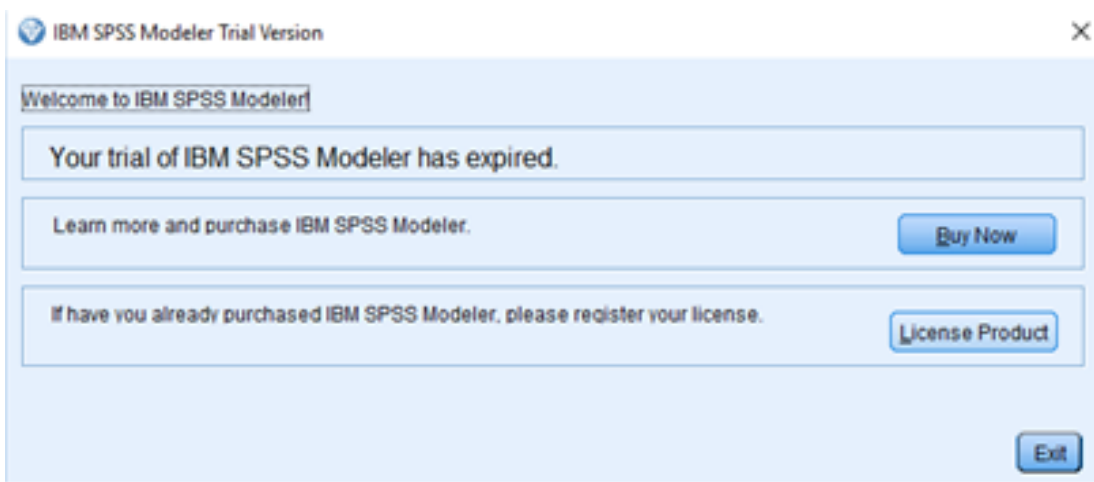
7. Click on ‘Finish’ to complete installation.



3. Licensing Your IBM SPSS Modeler Version 18.2.1 Software

1. SPSS Modeler 18.2.1 is licenced through the Licence Authorisation Wizard which can be opened in a number of ways.

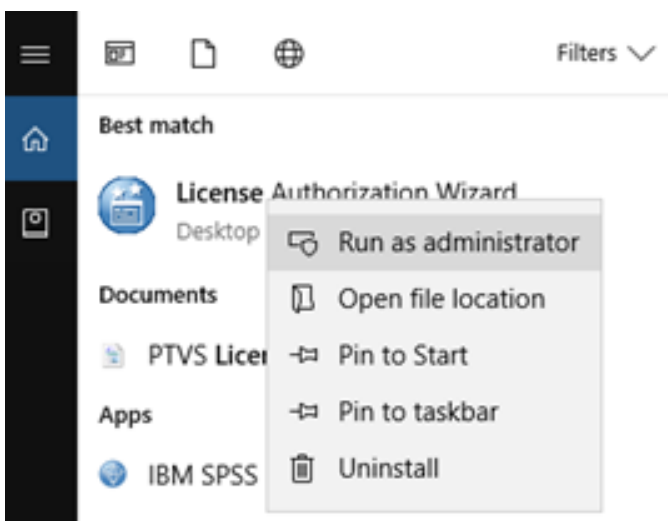
A.) If you chose to ‘Start IBM SPSS Modeler 18.2.1 now’ by ticking the box in the last step, you will get the screen below.



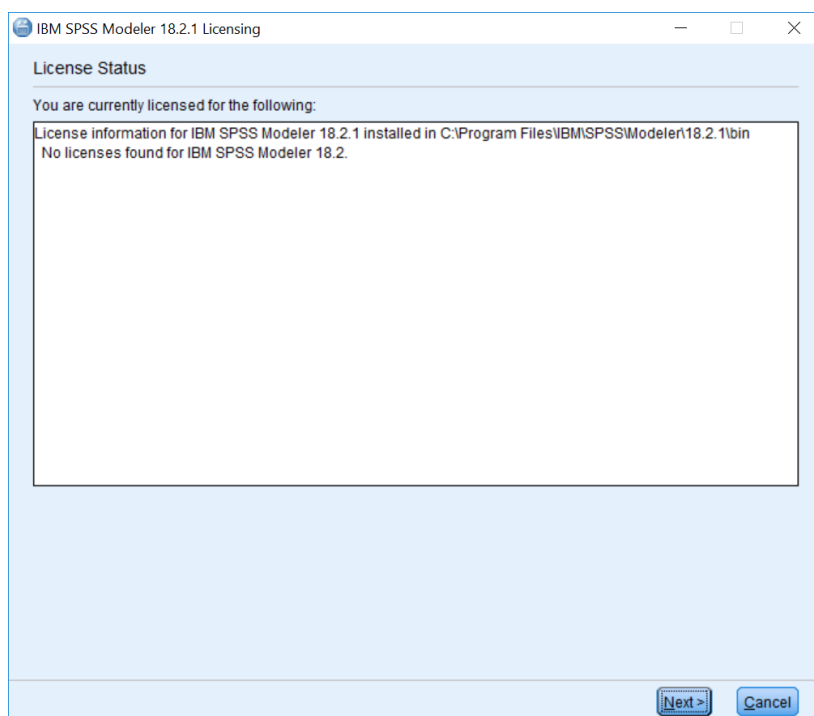
Please follow step 2 on part B below to license your product.

OR

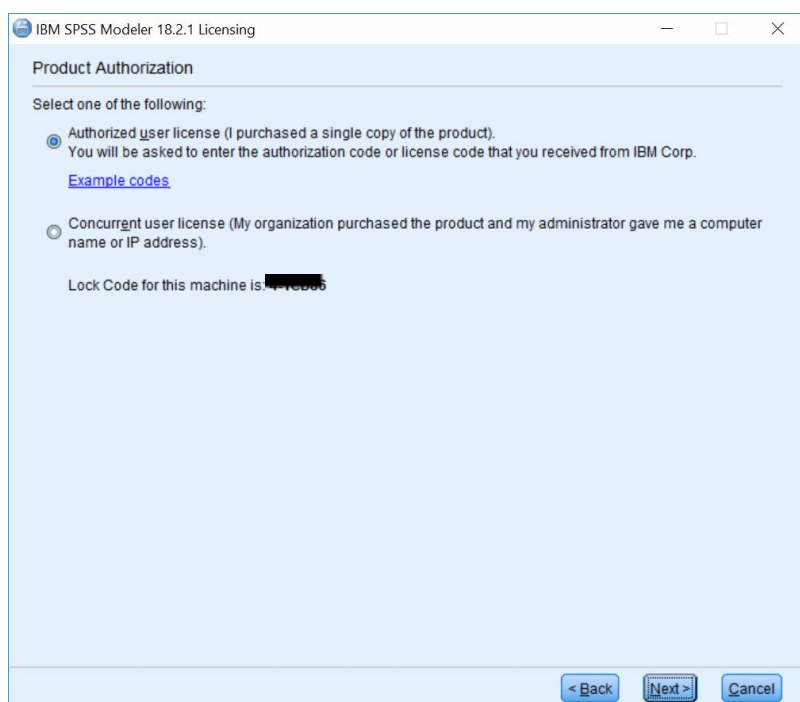
B.) If you have a desktop Version of IBM SPSS Modeler 18.2.1 and you are licensing your own machine and have access to both admin rights and your Authroization code, please choose “Authorized User Licesne” and “Next”.



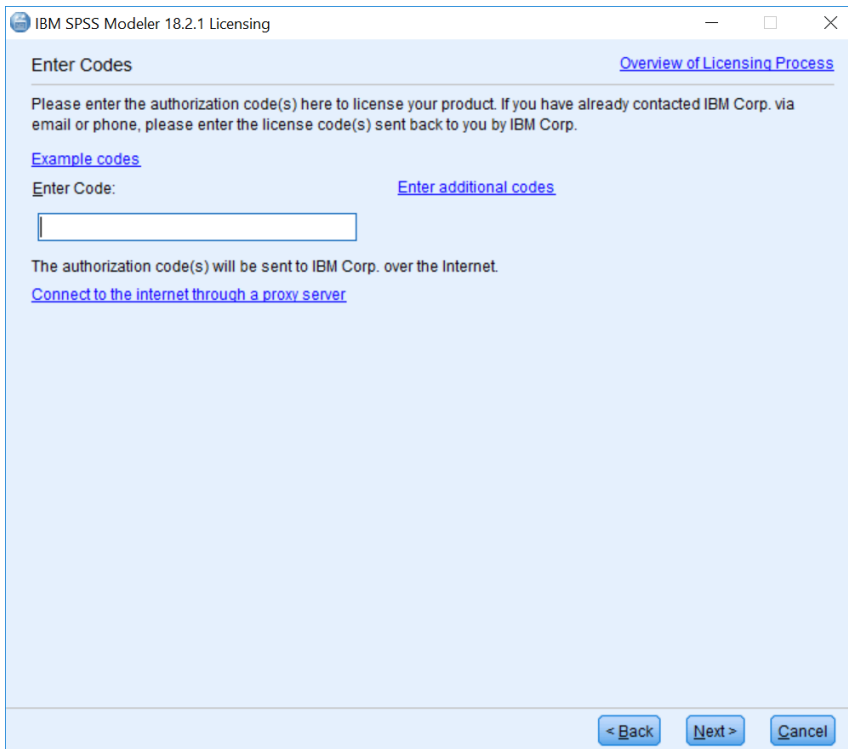
2. You will now be presented with this screen.



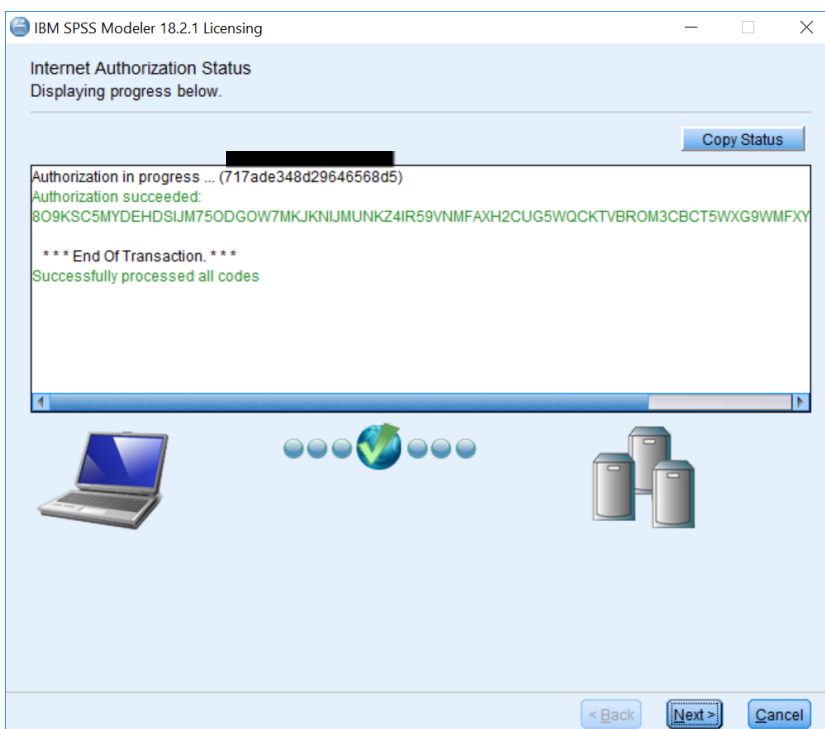
3. If you have a desktop Version of IBM SPSS Modeler 18.2.1 and you are licencing on your own machine and have access to both admin rights and your Authorisation Code, please choose 'Authorised User Licence' and 'Next'.



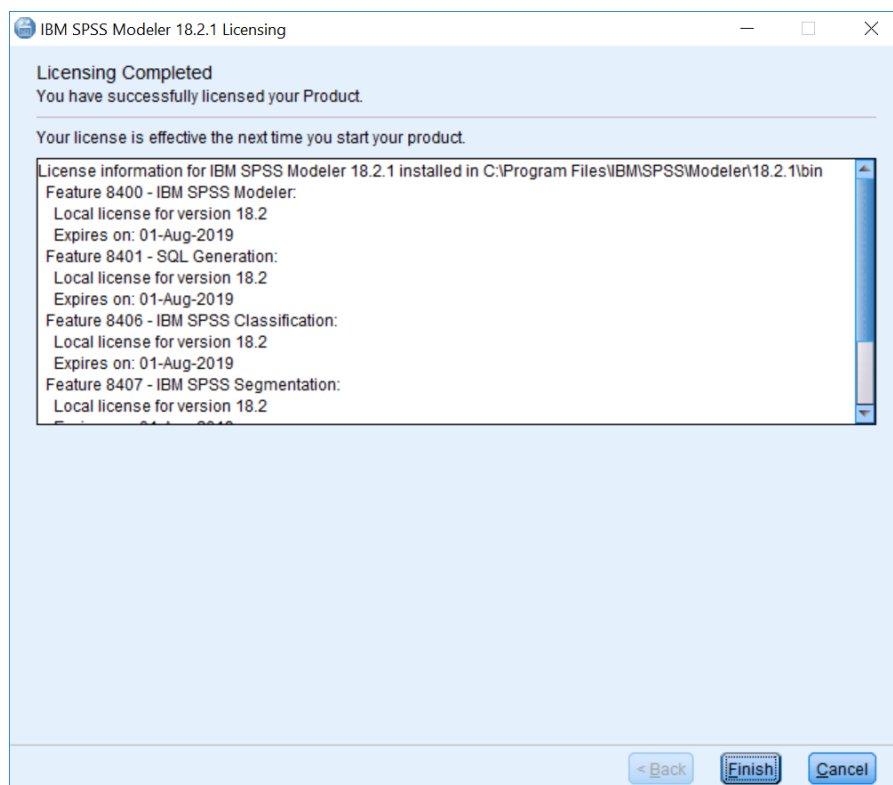
4. Please copy and paste your Authorisation Code into the space provided and click 'Next'.



5. If the licencing has been successful, you will see the screen below.



6. As the image below states, your IBM SPSS Modeler 18.1 will now be fully licenced when you open it next. You can click 'Finish' and restart your computer for the licencing to be fully activated.





VERSION 1

www.version1.com